

PCDH17 Rabbit Polyclonal Antibody



CAB10512

Product Information

Size:

20uL, 50uL, 100uL, 200uL

Observed MW:

150kDa

Calculated MW:

96kDa/126kDa

Applications:

WB

Reactivity:

Human

Protein Background

This gene belongs to the protocadherin gene family, a subfamily of the cadherin superfamily. The encoded protein contains six extracellular cadherin domains, a transmembrane domain, and a cytoplasmic tail differing from those of the classical cadherins. The encoded protein may play a role in the establishment and function of specific cell-cell connections in the brain.

Immunogen information

Gene ID:

27253

Uniprot

O14917

Synonyms:

PCDH17; PCDH68; PCH68

Antibody Information

Recommended dilutions:

WB 1:500 - 1:1000

Source:

Rabbit

Isotype:

IgG

Purification:

Affinity purification

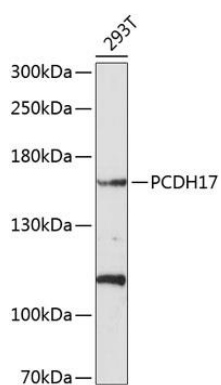
Immunogen:

Recombinant fusion protein containing a sequence corresponding to amino acids 610-710 of human PCDH17 (NP_001035519.1).

Storage:

Store at -20°C. Avoid freeze / thaw cycles. Buffer: PBS with 0.02% sodium azide, 50% glycerol, pH7.3.

Product Images



Western blot analysis of extracts of 293T cells, using PCDH17 antibody (CAB10512) at 1:1000 dilution. Secondary antibody: HRP Goat Anti-Rabbit IgG (H+L) (CABS014) at 1:10000 dilution. Lysates/proteins: 25ug per lane. Blocking buffer: 3% nonfat dry milk in TBST. Detection: ECL Enhanced Kit (CABM00021). Exposure time: 60s.