

VIPR1 Rabbit Polyclonal Antibody



CAB10515

Product Information

Size:

20uL, 50uL, 100uL, 200uL

Observed MW:

51kDa

Calculated MW:

28kDa/46kDa/47kDa/51kDa/
55kDa

Applications:

WB IHC

Reactivity:

Human, Rat

Antibody Information

Recommended dilutions:

WB 1:500 - 1:2000 IHC 1:50
- 1:200

Source:

Rabbit

Isotype:

IgG

Purification:

Affinity purification

Protein Background

This gene encodes a receptor for vasoactive intestinal peptide, a small neuropeptide. Vasoactive intestinal peptide is involved in smooth muscle relaxation, exocrine and endocrine secretion, and water and ion flux in lung and intestinal epithelia. Its actions are effected through integral membrane receptors associated with a guanine nucleotide binding protein which activates adenylate cyclase. Several transcript variants encoding different isoforms have been found for this gene.

Immunogen information

Gene ID:

7433

Uniprot

P32241

Synonyms:

VIPR1; HVR1; II; PACAP-R-2; PACAP-R2; RDC1; V1RG; VAPC1; VIP-R-1; VIPR; VIRG; VPAC1; VPAC1R; VPCAP1R

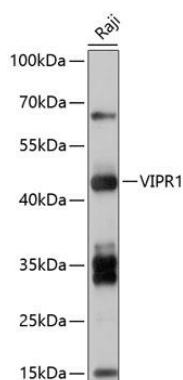
Immunogen:

Recombinant fusion protein containing a sequence corresponding to amino acids 31-150 of human VIPR1 (NP_004615.2).

Storage:

Store at -20°C. Avoid freeze / thaw cycles. Buffer: PBS with 0.02% sodium azide, 50% glycerol, pH7.3.

Product Images



Western blot analysis of extracts of Raji cells, using VIPR1 antibody (CAB10515) at 1:1000 dilution. Secondary antibody: HRP Goat Anti-Rabbit IgG (H+L) (CABS014) at 1:10000 dilution. Lysates/proteins: 25ug per lane. Blocking buffer: 3% nonfat dry milk in TBST. Detection: ECL Basic Kit (CABM00020). Exposure time: 5s.