

LRP8 Rabbit Polyclonal Antibody



CAB10517

Product Information

Size:

20uL, 50uL, 100uL, 200uL

Observed MW:

105-120kDa

Calculated MW:

77kDa/87kDa/99kDa/105kDa

Applications:

WB IHC IF

Reactivity:

Human, Mouse, Rat

Antibody Information

Recommended dilutions:

WB 1:500 - 1:2000 IHC 1:50
- 1:200 IF 1:50 - 1:200

Source:

Rabbit

Isotype:

IgG

Purification:

Affinity purification

Protein Background

This gene encodes a member of the low density lipoprotein receptor (LDLR) family. Low density lipoprotein receptors are cell surface proteins that play roles in both signal transduction and receptor-mediated endocytosis of specific ligands for lysosomal degradation. The encoded protein plays a critical role in the migration of neurons during development by mediating Reelin signaling, and also functions as a receptor for the cholesterol transport protein apolipoprotein E. Expression of this gene may be a marker for major depressive disorder. Alternatively spliced transcript variants encoding multiple isoforms have been observed for this gene.

Immunogen information

Gene ID:

7804

Uniprot

Q14114

Synonyms:

LRP8; APOER2; HSZ75190; LRP-8; MCI1

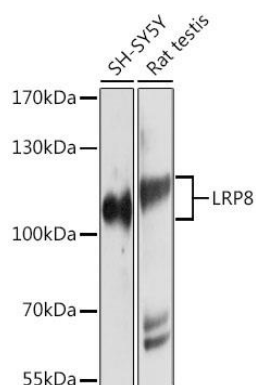
Immunogen:

A synthetic peptide corresponding to a sequence within amino acids 900 to the C-terminus of human LRP8 (NP_004622.2).

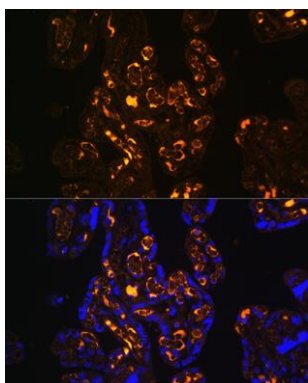
Storage:

Store at -20°C. Avoid freeze / thaw cycles. Buffer: PBS with 0.02% sodium azide, 50% glycerol, pH7.3.

Product Images



Western blot analysis of extracts of various cell lines, using LRP8 antibody (CAB10517) at 1:1000 dilution. Secondary antibody: HRP Goat Anti-Rabbit IgG (H+L) (CABS014) at 1:10000 dilution. Lysates/proteins: 25ug per lane. Blocking buffer: 3% nonfat dry milk in TBST. Detection: ECL Basic Kit (CABM00020). Exposure time: 30s.



Immunofluorescence analysis of Human placenta using LRP8 antibody (CAB10517) at dilution of 1:100. Blue: DAPI for nuclear staining.