

DVL1 Rabbit Polyclonal Antibody



CAB10536

Product Information

Size:

20uL, 50uL, 100uL, 200uL

Observed MW:

72kDa

Calculated MW:

72kDa/75kDa

Applications:

WB IHC IF

Reactivity:

Human, Mouse, Rat

Protein Background

DVL1, the human homolog of the Drosophila dishevelled gene (dsh) encodes a cytoplasmic phosphoprotein that regulates cell proliferation, acting as a transducer molecule for developmental processes, including segmentation and neuroblast specification. DVL1 is a candidate gene for neuroblastomatous transformation. The Schwartz-Jampel syndrome and Charcot-Marie-Tooth disease type 2A have been mapped to the same region as DVL1. The phenotypes of these diseases may be consistent with defects which might be expected from aberrant expression of a DVL gene during development.

Immunogen information

Gene ID:

1855

Uniprot

O14640

Synonyms:

DVL1; DRS2; DVL; DVL1L1; DVL1P1

Antibody Information

Recommended dilutions:

WB 1:500 - 1:2000 IHC 1:50
- 1:200 IF 1:50 - 1:200

Source:

Rabbit

Isotype:

IgG

Purification:

Affinity purification

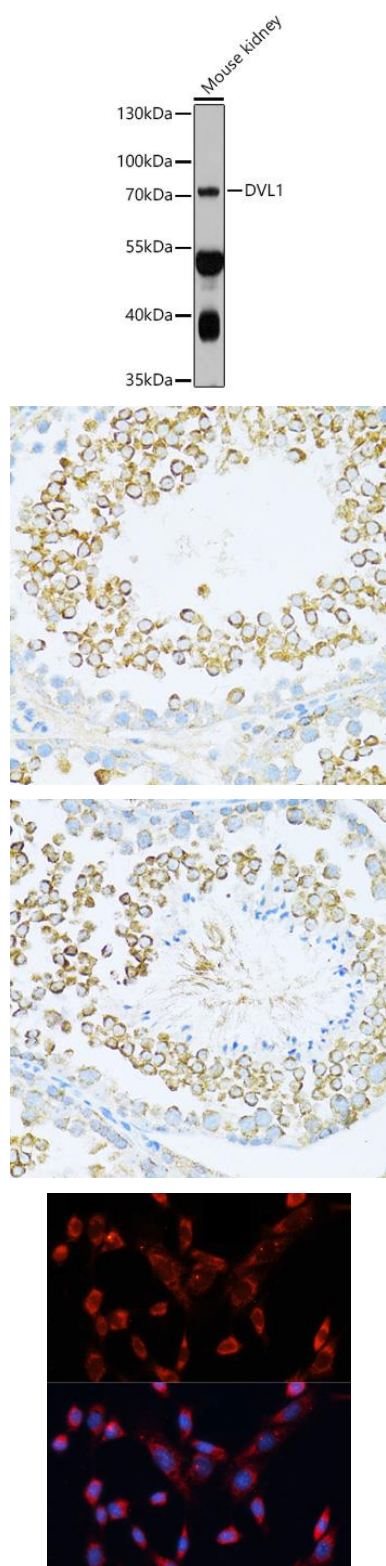
Immunogen:

Recombinant fusion protein containing a sequence corresponding to amino acids 510-640 of human DVL1 (NP_004412.2).

Storage:

Store at -20°C. Avoid freeze / thaw cycles. Buffer: PBS with 0.02% sodium azide, 50% glycerol, pH7.3.

Product Images



Western blot analysis of extracts of Mouse kidney, using DVL1 antibody (CAB10536) at 1:1000 dilution. Secondary antibody: HRP Goat Anti-Rabbit IgG (H+L) (CABS014) at 1:10000 dilution. Lysates/proteins: 25ug per lane. Blocking buffer: 3% nonfat dry milk in TBST. Detection: ECL Basic Kit (CABM00020). Exposure time: 60s.

Immunohistochemistry of paraffin-embedded rat testis using DVL1 antibody (CAB10536) at dilution of 1:100 (40x lens).

Immunohistochemistry of paraffin-embedded mouse testis using DVL1 antibody (CAB10536) at dilution of 1:100 (40x lens).

Immunofluorescence analysis of NIH/3T3 cells using DVL1 antibody (CAB10536) at dilution of 1:100. Blue: DAPI for nuclear staining.