

P4HA1 Rabbit Polyclonal Antibody



CAB10538

Product Information

Size:

20uL, 50uL, 100uL, 200uL

Observed MW:

61kDa

Calculated MW:

58kDa/60kDa/61kDa

Applications:

WB IF

Reactivity:

Human, Mouse

Antibody Information

Recommended dilutions:

WB 1:1000 - 1:2000 IF 1:50
- 1:200

Source:

Rabbit

Isotype:

IgG

Purification:

Affinity purification

Protein Background

This gene encodes a component of prolyl 4-hydroxylase, a key enzyme in collagen synthesis composed of two identical alpha subunits and two beta subunits. The encoded protein is one of several different types of alpha subunits and provides the major part of the catalytic site of the active enzyme. In collagen and related proteins, prolyl 4-hydroxylase catalyzes the formation of 4-hydroxyproline that is essential to the proper three-dimensional folding of newly synthesized procollagen chains. Alternatively spliced transcript variants encoding different isoforms have been described.

Immunogen information

Gene ID:

5033

Uniprot

P13674

Synonyms:

P4HA1; P4HA

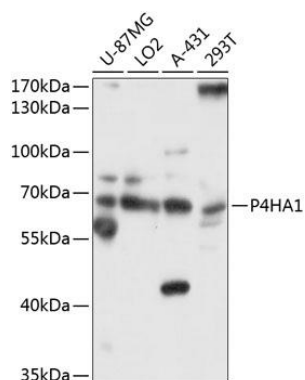
Immunogen:

Recombinant fusion protein containing a sequence corresponding to amino acids 235-534 of human P4HA1 (NP_001017962.1).

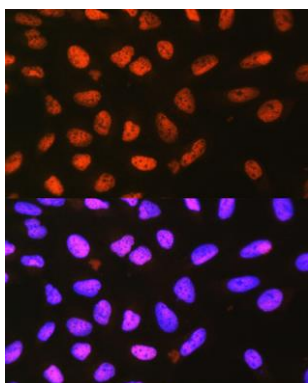
Storage:

Store at -20°C. Avoid freeze / thaw cycles. Buffer: PBS with 0.02% sodium azide, 50% glycerol, pH7.3.

Product Images



Western blot analysis of extracts of various cell lines, using P4HA1 antibody (CAB10538) at 1:1000 dilution. Secondary antibody: HRP Goat Anti-Rabbit IgG (H+L) (CABS014) at 1:10000 dilution. Lysates/proteins: 25ug per lane. Blocking buffer: 3% nonfat dry milk in TBST. Detection: ECL Basic Kit (CABM00020). Exposure time: 8s.



Immunofluorescence analysis of L929 cells using P4HA1 Rabbit pAb (CAB10538) at dilution of 1:100 (40x lens). Blue: DAPI for nuclear staining.