

[KO Validated] HK1 Rabbit Polyclonal Antibody



CAB1054

Product Information

Size:

20uL, 50uL, 100uL, 200uL

Observed MW:

102kDa

Calculated MW:

101kDa/102kDa

Applications:

WB IHC IF

Reactivity:

Human, Mouse, Rat

Antibody Information

Recommended dilutions:

WB 1:500 - 1:2000 IHC 1:50
- 1:200 IF 1:50 - 1:200

Source:

Rabbit

Isotype:

IgG

Purification:

Affinity purification

Protein Background

Hexokinases phosphorylate glucose to produce glucose-6-phosphate, the first step in most glucose metabolism pathways. This gene encodes a ubiquitous form of hexokinase which localizes to the outer membrane of mitochondria. Mutations in this gene have been associated with hemolytic anemia due to hexokinase deficiency. Alternative splicing of this gene results in several transcript variants which encode different isoforms, some of which are tissue-specific.

Immunogen information

Gene ID:

3098

Uniprot

P19367

Synonyms:

HK1; HK; HK1-ta; HK1-tb; HK1-tc; HKD; HKI; HMSNR; HXK1;
hexokinase; RP79

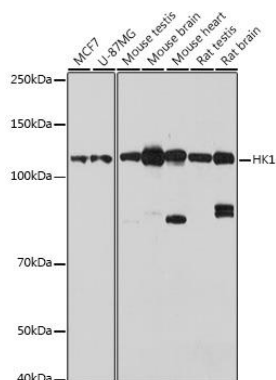
Immunogen:

Recombinant fusion protein containing a sequence corresponding to amino acids 20-300 of human HK1 (NP_000179.2).

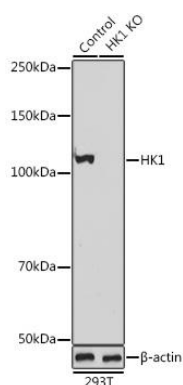
Storage:

Store at -20°C. Avoid freeze / thaw cycles. Buffer: PBS with 0.02% sodium azide, 50% glycerol, pH7.3.

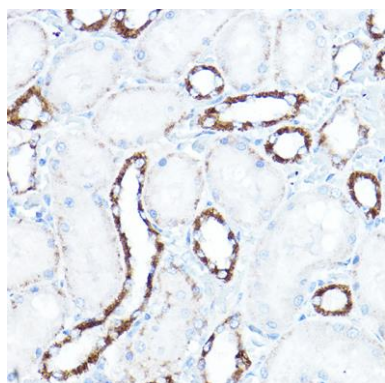
Product Images



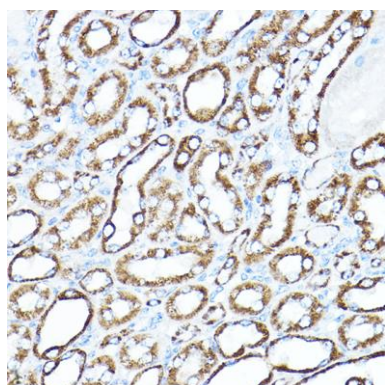
Western blot analysis of extracts of various cell lines, using HK1 antibody (CAB1054) at 1:1000 dilution. Secondary antibody: HRP Goat Anti-Rabbit IgG (H+L) (CABS014) at 1:10000 dilution. Lysates/proteins: 25ug per lane. Blocking buffer: 3% nonfat dry milk in TBST. Detection: ECL Basic Kit (CABM00020). Exposure time: 10s.



Western blot analysis of extracts from normal (control) and HK1 knockout (KO) 293T cells, using HK1 antibody (CAB1054) at 1:1000 dilution. Secondary antibody: HRP Goat Anti-Rabbit IgG (H+L) (CABS014) at 1:10000 dilution. Lysates/proteins: 25ug per lane. Blocking buffer: 3% nonfat dry milk in TBST. Detection: ECL Basic Kit (CABM00020). Exposure time: 10s.



Immunohistochemistry of paraffin-embedded rat kidney using HK1 Rabbit pAb (CAB1054) at dilution of 1:150 (40x lens).



Immunohistochemistry of paraffin-embedded mouse kidney using HK1 Rabbit pAb (CAB1054) at dilution of 1:150 (40x lens).