

# UBE2N Rabbit Polyclonal Antibody



CAB10543

---

## Product Information

**Size:**

20uL, 50uL, 100uL, 200uL

**Observed MW:**

17kDa

**Calculated MW:**

17kDa

**Applications:**

WB

**Reactivity:**

Human, Mouse, Rat

## Protein Background

The modification of proteins with ubiquitin is an important cellular mechanism for targeting abnormal or short-lived proteins for degradation. Ubiquitination involves at least three classes of enzymes: ubiquitin-activating enzymes, or E1s, ubiquitin-conjugating enzymes, or E2s, and ubiquitin-protein ligases, or E3s. This gene encodes a member of the E2 ubiquitin-conjugating enzyme family. Studies in mouse suggest that this protein plays a role in DNA postreplication repair.

## Immunogen information

**Gene ID:**

7334

**Uniprot**

P61088

**Synonyms:**

UBE2N; HEL-S-71; UBC13; UBCHBEN; UbcH-ben; UbcH13

## Antibody Information

**Recommended dilutions:**

WB 1:1000 - 1:2000

**Source:**

Rabbit

**Isotype:**

IgG

**Purification:**

Affinity purification

**Immunogen:**

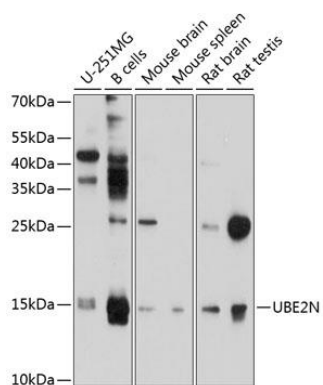
Recombinant fusion protein containing a sequence corresponding to amino acids 1-152 of human UBE2N (NP\_003339.1).

**Storage:**

Store at -20°C. Avoid freeze / thaw cycles. Buffer: PBS with 0.02% sodium azide, 50% glycerol, pH7.3.

## Product Images

---



Western blot analysis of extracts of various cell lines, using UBE2N antibody (CAB10543) at 1:1000 dilution. Secondary antibody: HRP Goat Anti-Rabbit IgG (H+L) (CABS014) at 1:10000 dilution. Lysates/proteins: 25ug per lane. Blocking buffer: 3% nonfat dry milk in TBST. Detection: ECL Basic Kit (CABM00020). Exposure time: 15s.