

# PRMT1 Rabbit Polyclonal Antibody



CAB1055

## Product Information

### Size:

20uL, 50uL, 100uL, 200uL

### Observed MW:

42kDa

### Calculated MW:

39kDa/40kDa/41kDa

### Applications:

WB IHC IF

### Reactivity:

Human, Mouse, Rat

## Antibody Information

### Recommended dilutions:

WB 1:500 - 1:2000 IHC 1:50  
- 1:200 IF 1:50 - 1:200

### Source:

Rabbit

### Isotype:

IgG

### Purification:

Affinity purification

## Protein Background

This gene encodes a member of the protein arginine N-methyltransferase (PRMT) family. Post-translational modification of target proteins by PRMTs plays an important regulatory role in many biological processes, whereby PRMTs methylate arginine residues by transferring methyl groups from S-adenosyl-L-methionine to terminal guanidino nitrogen atoms. The encoded protein is a type I PRMT and is responsible for the majority of cellular arginine methylation activity. Increased expression of this gene may play a role in many types of cancer. Alternatively spliced transcript variants encoding multiple isoforms have been observed for this gene, and a pseudogene of this gene is located on the long arm of chromosome 5.

## Immunogen information

### Gene ID:

3276

### Uniprot

Q99873

### Synonyms:

PRMT1; ANM1; HCP1; HRMT1L2; IR1B4

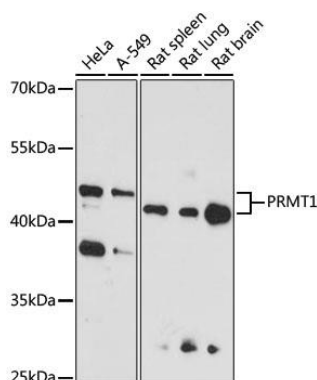
### Immunogen:

Recombinant fusion protein containing a sequence corresponding to amino acids 20-353 of human PRMT1 (NP\_938074.2).

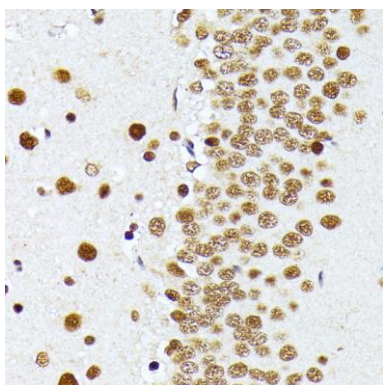
### Storage:

Store at -20°C. Avoid freeze / thaw cycles. Buffer: PBS with 0.02% sodium azide, 50% glycerol, pH7.3.

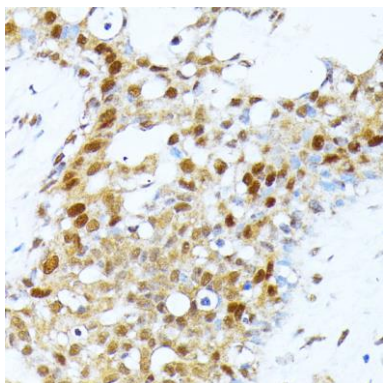
## Product Images



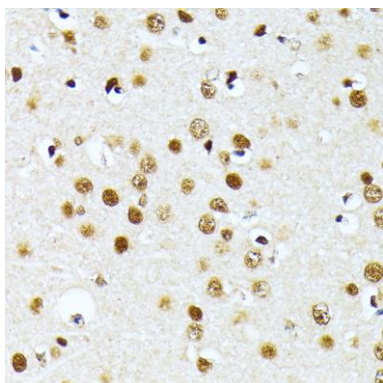
Western blot analysis of extracts of various cell lines, using PRMT1 antibody (CAB1055) at 1:1000 dilution. Secondary antibody: HRP Goat Anti-Rabbit IgG (H+L) (CABS014) at 1:10000 dilution. Lysates/proteins: 25ug per lane. Blocking buffer: 3% nonfat dry milk in TBST. Detection: ECL Basic Kit (CABM00020). Exposure time: 90s.



Immunohistochemistry of paraffin-embedded rat brain using PRMT1 antibody (CAB1055) at dilution of 1:100 (40x lens).



Immunohistochemistry of paraffin-embedded human breast cancer using PRMT1 antibody (CAB1055) at dilution of 1:100 (40x lens).



Immunohistochemistry of paraffin-embedded mouse brain using PRMT1 antibody (CAB1055) at dilution of 1:100 (40x lens).