

SEC11A Rabbit Polyclonal Antibody



CAB10552

Product Information

Size:

20uL, 50uL, 100uL, 200uL

Observed MW:

21kDa

Calculated MW:

17kDa/18kDa/20kDa/21kDa

Applications:

WB IF

Reactivity:

Human, Mouse, Rat

Protein Background

This gene encodes a member of the peptidase S26B family. The encoded protein is an 18kDa subunit of the signal peptidase complex and has been linked to cell migration and invasion, gastric cancer and lymph node metastasis. Alternative splicing results in multiple transcript variants. A related pseudogene has been identified on chromosome 8.

Immunogen information

Gene ID:

23478

Uniprot

P67812

Synonyms:

SEC11A; 1810012E07Rik; SEC11L1; SPC18; SPCS4A; sid2895

Antibody Information

Recommended dilutions:

WB 1:500 - 1:2000 IF 1:50 - 1:200

Source:

Rabbit

Isotype:

IgG

Purification:

Affinity purification

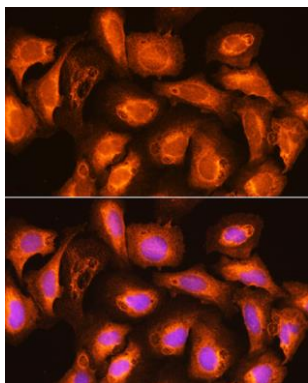
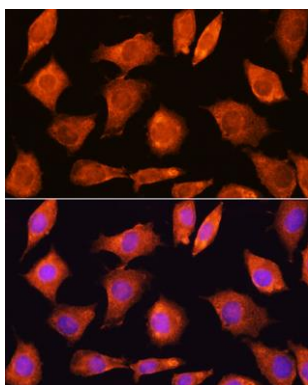
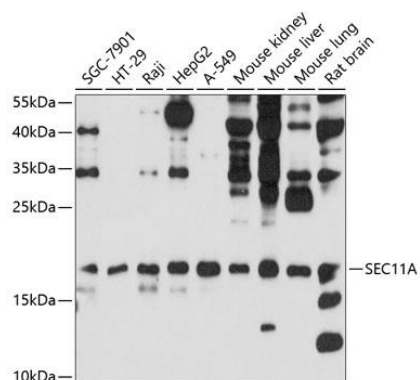
Immunogen:

Recombinant fusion protein containing a sequence corresponding to amino acids 37-145 of human SEC11A (NP_055115.1).

Storage:

Store at -20°C. Avoid freeze / thaw cycles. Buffer: PBS with 0.02% sodium azide, 50% glycerol, pH7.3.

Product Images



Western blot analysis of extracts of various cell lines, using SEC11A antibody (CAB10552) at 1:1000 dilution. Secondary antibody: HRP Goat Anti-Rabbit IgG (H+L) (CABS014) at 1:10000 dilution. Lysates/proteins: 25ug per lane. Blocking buffer: 3% nonfat dry milk in TBST. Detection: ECL Basic Kit (CABM00020). Exposure time: 90s.

Immunofluorescence analysis of L929 cells using SEC11A Rabbit pAb (CAB10552) at dilution of 1:100. Blue: DAPI for nuclear staining.

Immunofluorescence analysis of U2OS cells using SEC11A Rabbit pAb (CAB10552) at dilution of 1:100. Blue: DAPI for nuclear staining.