

# COL11A1 Rabbit Polyclonal Antibody



CAB10559

---

## Product Information

### Size:

20uL, 50uL, 100uL, 200uL

### Observed MW:

Refer to figures

### Calculated MW:

167kDa/176kDa/181kDa/182kDa

### Applications:

IHC

### Reactivity:

Mouse, Rat

## Protein Background

This gene encodes one of the two alpha chains of type XI collagen, a minor fibrillar collagen. Type XI collagen is a heterotrimer but the third alpha chain is a post-translationally modified alpha 1 type II chain. Mutations in this gene are associated with type II Stickler syndrome and with Marshall syndrome. A single-nucleotide polymorphism in this gene is also associated with susceptibility to lumbar disc herniation. Multiple transcript variants have been identified for this gene.

## Immunogen information

### Gene ID:

1301

### Uniprot

P12107

### Synonyms:

COL11A1; CO11A1; COLL6; STL2

## Antibody Information

### Recommended dilutions:

IHC 1:50 - 1:200

### Source:

Rabbit

### Isotype:

IgG

### Purification:

Affinity purification

### Immunogen:

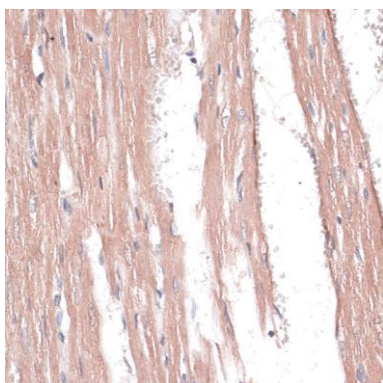
Recombinant fusion protein containing a sequence corresponding to amino acids 260-430 of human COL11A1 (NP\_542196.2).

### Storage:

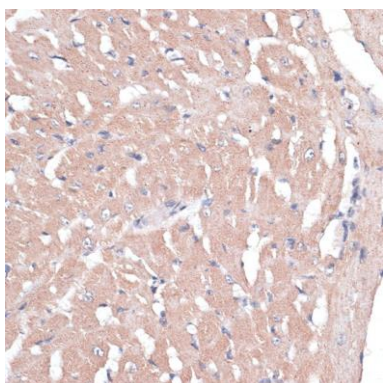
Store at -20°C. Avoid freeze / thaw cycles. Buffer: PBS with 0.02% sodium azide, 50% glycerol, pH7.3.

## Product Images

---



Immunohistochemistry of paraffin-embedded rat heart using COL11A1 antibody (CAB10559) at dilution of 1:100 (40x lens).



Immunohistochemistry of paraffin-embedded mouse heart using COL11A1 antibody (CAB10559) at dilution of 1:100 (40x lens).