

GUCY2C Rabbit Polyclonal Antibody



CAB10562

Product Information

Size:

20uL, 50uL, 100uL, 200uL

Observed MW:

123kDa

Calculated MW:

123kDa

Applications:

WB

Reactivity:

Human, Mouse

Protein Background

This gene encodes a transmembrane protein that functions as a receptor for endogenous peptides guanylin and uroguanylin, and the heat-stable E. coli enterotoxin. The encoded protein activates the cystic fibrosis transmembrane conductance regulator. Mutations in this gene are associated with familial diarrhea (autosomal dominant) and meconium ileus (autosomal recessive).

Immunogen information

Gene ID:

2984

Uniprot

P25092

Synonyms:

GUCY2C; DIAR6; GC-C; GUC2C; MECIL; MUCIL; STAR

Antibody Information

Recommended dilutions:

WB 1:500 - 1:2000

Source:

Rabbit

Isotype:

IgG

Purification:

Affinity purification

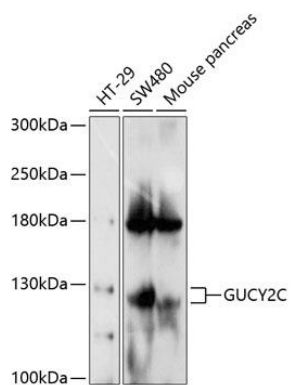
Immunogen:

Recombinant fusion protein containing a sequence corresponding to amino acids 24-330 of human GUCY2C (NP_004954.2).

Storage:

Store at -20°C. Avoid freeze / thaw cycles. Buffer: PBS with 0.02% sodium azide, 50% glycerol, pH7.3.

Product Images



Western blot analysis of extracts of various cell lines, using GUCY2C antibody (CAB10562) at 1:1000 dilution. Secondary antibody: HRP Goat Anti-Rabbit IgG (H+L) (CABS014) at 1:10000 dilution. Lysates/proteins: 25ug per lane. Blocking buffer: 3% nonfat dry milk in TBST. Detection: ECL Enhanced Kit (CABM00021). Exposure time: 30s.