

# LGMN Rabbit Polyclonal Antibody



CAB10570

## Product Information

### Size:

20uL, 50uL, 100uL, 200uL

### Observed MW:

54kDa

### Calculated MW:

42kDa/49kDa

### Applications:

WB IF

### Reactivity:

Human, Mouse, Rat

## Protein Background

This gene encodes a cysteine protease that has a strict specificity for hydrolysis of asparaginyl bonds. This enzyme may be involved in the processing of bacterial peptides and endogenous proteins for MHC class II presentation in the lysosomal/endosomal systems. Enzyme activation is triggered by acidic pH and appears to be autocatalytic. Protein expression occurs after monocytes differentiate into dendritic cells. A fully mature, active enzyme is produced following lipopolysaccharide expression in mature dendritic cells. Overexpression of this gene may be associated with the majority of solid tumor types. This gene has a pseudogene on chromosome 13. Several alternatively spliced transcript variants have been described, but the biological validity of only two has been determined. These two variants encode the same isoform.

## Immunogen information

### Gene ID:

5641

### Uniprot

Q99538

## Antibody Information

### Recommended dilutions:

WB 1:1000 - 1:2000 IF 1:50  
- 1:200

### Source:

Rabbit

### Isotype:

IgG

### Purification:

Affinity purification

### Synonyms:

LGMN; AEP; LGMN1; PRSC1; legumain

### Immunogen:

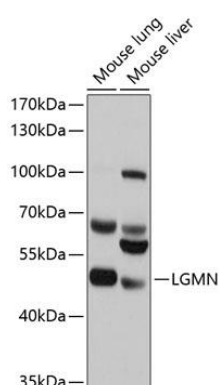
Recombinant fusion protein containing a sequence corresponding to amino acids 18-323 of human LGMN (NP\_001008530.1).

### Storage:

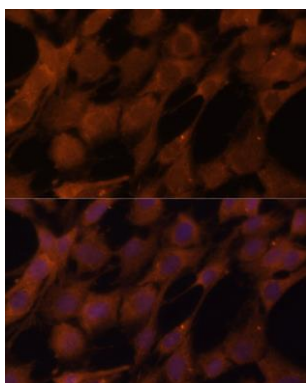
Store at -20°C. Avoid freeze / thaw cycles. Buffer: PBS with 0.02% sodium azide, 50% glycerol, pH7.3.

## Product Images

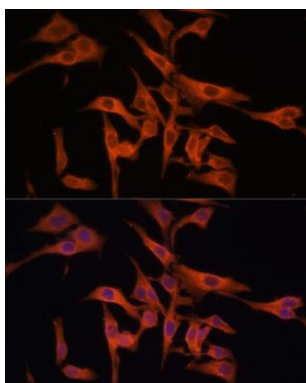
---



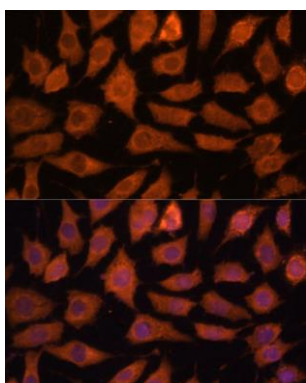
Western blot analysis of extracts of various cell lines, using LGMN antibody (CAB10570) at 1:1000 dilution. Secondary antibody: HRP Goat Anti-Rabbit IgG (H+L) (CABS014) at 1:10000 dilution. Lysates/proteins: 25ug per lane. Blocking buffer: 3% nonfat dry milk in TBST. Detection: ECL Basic Kit (CABM00020). Exposure time: 1s.



Immunofluorescence analysis of C6 cells using LGMN Polyclonal Antibody (CAB10570) at dilution of 1:100 (40x lens). Blue: DAPI for nuclear staining.



Immunofluorescence analysis of HeLa cells using LGMN Polyclonal Antibody (CAB10570) at dilution of 1:100 (40x lens). Blue: DAPI for nuclear staining.



Immunofluorescence analysis of L929 cells using LGMN Polyclonal Antibody (CAB10570) at dilution of 1:100 (40x lens). Blue: DAPI for nuclear staining.