

RAB13 Rabbit Polyclonal Antibody



CAB10571

Product Information

Size:

20uL, 50uL, 100uL, 200uL

Observed MW:

23kDa

Calculated MW:

22kDa

Applications:

WB IF

Reactivity:

Human, Rat

Antibody Information

Recommended dilutions:

WB 1:1000 - 1:2000 IF 1:50
- 1:200

Source:

Rabbit

Isotype:

IgG

Purification:

Affinity purification

Protein Background

This gene is a member of the Rab family of small G proteins and plays a role in regulating membrane trafficking between trans-Golgi network (TGN) and recycling endosomes (RE). The encoded protein is involved in the assembly of tight junctions, which are components of the apical junctional complex (AJC) of epithelial cells. The AJC plays a role in forming a barrier between luminal contents and the underlying tissue. Additional functions associated with the protein include endocytic recycling of occludin, regulation of epithelial cell scattering, neuronal regeneration and regulation of neurite outgrowth. Alternately spliced transcript variants have been observed for this gene. A pseudogene associated with this gene is located on chromosome 12.

Immunogen information

Gene ID:

5872

Uniprot

P51153

Synonyms:

RAB13; GIG4

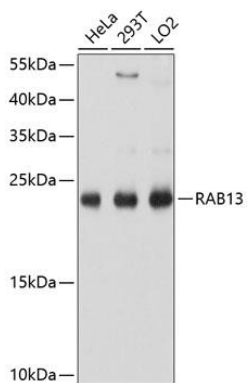
Immunogen:

Recombinant fusion protein containing a sequence corresponding to amino acids 1-203 of human RAB13 (NP_002861.1).

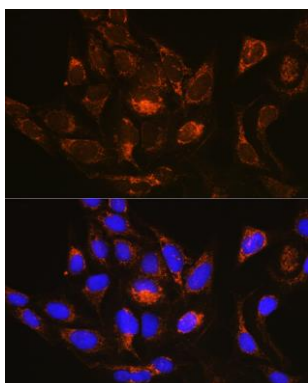
Storage:

Store at -20°C. Avoid freeze / thaw cycles. Buffer: PBS with 0.02% sodium azide, 50% glycerol, pH7.3.

Product Images



Western blot analysis of extracts of various cell lines, using RAB13 antibody (CAB10571) at 1:1000 dilution. Secondary antibody: HRP Goat Anti-Rabbit IgG (H+L) (CABS014) at 1:10000 dilution. Lysates/proteins: 25ug per lane. Blocking buffer: 3% nonfat dry milk in TBST. Detection: ECL Basic Kit (CABM00020). Exposure time: 1s.



Immunofluorescence analysis of U-2 OS cells using RAB13 Rabbit pAb (CAB10571) at dilution of 1:100 (40x lens). Blue: DAPI for nuclear staining.