

SCN2A Rabbit Polyclonal Antibody



CAB10574

Product Information

Size:

20uL, 50uL, 100uL, 200uL

Observed MW:

250kDa

Calculated MW:

227kDa

Applications:

WB

Reactivity:

Human

Antibody Information

Recommended dilutions:

WB 1:1000 - 1:2000

Source:

Rabbit

Isotype:

IgG

Purification:

Affinity purification

Protein Background

Voltage-gated sodium channels are transmembrane glycoprotein complexes composed of a large alpha subunit with four repeat domains, each of which is composed of six membrane-spanning segments, and one or more regulatory beta subunits. Voltage-gated sodium channels function in the generation and propagation of action potentials in neurons and muscle. This gene encodes one member of the sodium channel alpha subunit gene family. Allelic variants of this gene are associated with seizure disorders and autism spectrum disorder. Alternative splicing results in multiple transcript variants.

Immunogen information

Gene ID:

6326

Uniprot

Q99250

Synonyms:

SCN2A; BFIC3; BFIS3; BFNIS; EIEE11; HBA; HBSCI; HBSCII; NAC2; Na(v)1.2; Nav1.2; SCN2A1; SCN2A2

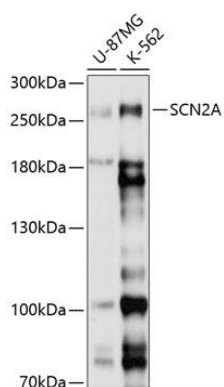
Immunogen:

Recombinant fusion protein containing a sequence corresponding to amino acids 275-401 of human SCN2A (NP_001035232.1).

Storage:

Store at -20°C. Avoid freeze / thaw cycles. Buffer: PBS with 0.02% sodium azide, 50% glycerol, pH7.3.

Product Images



Western blot analysis of extracts of various cell lines, using SCN2A antibody (CAB10574) at 1:1000 dilution. Secondary antibody: HRP Goat Anti-Rabbit IgG (H+L) (CABS014) at 1:10000 dilution. Lysates/proteins: 25ug per lane. Blocking buffer: 3% nonfat dry milk in TBST. Detection: ECL Basic Kit (CABM00020). Exposure time: 5s.