

PARG Rabbit Polyclonal Antibody



CAB10577

Product Information

Size:

20uL, 50uL, 100uL, 200uL

Observed MW:

111kDa

Calculated MW:

54kDa/60kDa/99kDa/102kDa
/111kDa

Applications:

WB

Reactivity:

Human, Mouse, Rat

Antibody Information

Recommended dilutions:

WB 1:1000 - 1:2000

Source:

Rabbit

Isotype:

IgG

Purification:

Affinity purification

Protein Background

Poly(ADP-ribose) glycohydrolase (PARG) is the major enzyme responsible for the catabolism of poly(ADP-ribose), a reversible covalent-modifier of chromosomal proteins. The protein is found in many tissues and may be subject to proteolysis generating smaller, active products. Several transcript variants encoding different isoforms have been found for this gene.

Immunogen information

Gene ID:

8505

Uniprot

Q86W56

Synonyms:

PARG; PARG99

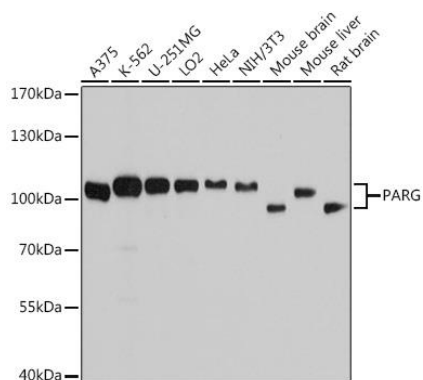
Immunogen:

Recombinant fusion protein containing a sequence corresponding to amino acids 777-976 of human PARG (NP_003622.2).

Storage:

Store at -20°C. Avoid freeze / thaw cycles. Buffer: PBS with 0.02% sodium azide, 50% glycerol, pH7.3.

Product Images



Western blot analysis of extracts of various cell lines, using PARG antibody (CAB10577) at 1:7000 dilution. Secondary antibody: HRP Goat Anti-Rabbit IgG (H+L) (CABS014) at 1:10000 dilution. Lysates/proteins: 25ug per lane. Blocking buffer: 3% nonfat dry milk in TBST. Detection: ECL Basic Kit (CABM00020). Exposure time: 10s.