

# YWHAE Rabbit Polyclonal Antibody



CAB1058

## Product Information

### Size:

20uL, 50uL, 100uL, 200uL

### Observed MW:

29-32Kda

### Calculated MW:

26kDa/29kDa

### Applications:

WB IF

### Reactivity:

Human, Mouse, Rat

## Antibody Information

### Recommended dilutions:

WB 1:500 - 1:2000 IF 1:50 - 1:200

### Source:

Rabbit

### Isotype:

IgG

### Purification:

Affinity purification

## Protein Background

This gene product belongs to the 14-3-3 family of proteins which mediate signal transduction by binding to phosphoserine-containing proteins. This highly conserved protein family is found in both plants and mammals, and this protein is 100% identical to the mouse ortholog. It interacts with CDC25 phosphatases, RAF1 and IRS1 proteins, suggesting its role in diverse biochemical activities related to signal transduction, such as cell division and regulation of insulin sensitivity. It has also been implicated in the pathogenesis of small cell lung cancer. Two transcript variants, one protein-coding and the other non-protein-coding, have been found for this gene.

## Immunogen information

### Gene ID:

7531

### Uniprot

P62258

### Synonyms:

YWHAE; 14-3-3E; HEL2; KCIP-1; MDCR; MDS

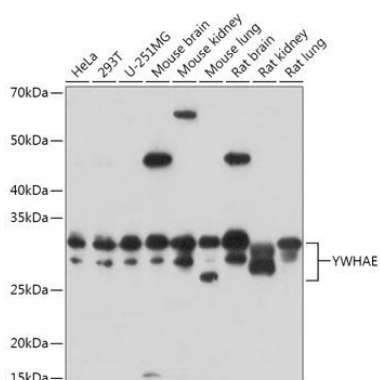
### Immunogen:

Recombinant fusion protein containing a sequence corresponding to amino acids 1-255 of human YWHAE (NP\_006752.1).

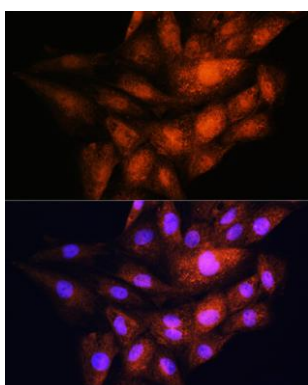
### Storage:

Store at -20°C. Avoid freeze / thaw cycles. Buffer: PBS with 0.02% sodium azide, 50% glycerol, pH7.3.

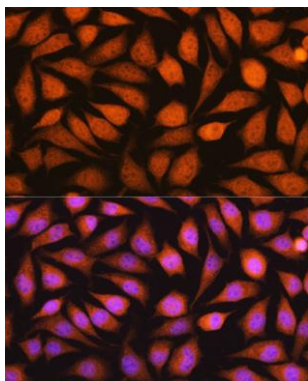
## Product Images



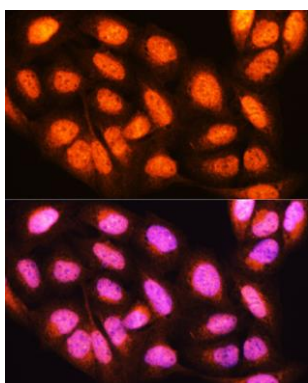
Western blot analysis of extracts of various cell lines, using YWHAE antibody (CAB1058) at 1:3000 dilution. Secondary antibody: HRP Goat Anti-Rabbit IgG (H+L) (CABS014) at 1:10000 dilution. Lysates/proteins: 25ug per lane. Blocking buffer: 3% nonfat dry milk in TBST. Detection: ECL Basic Kit (CABM00020). Exposure time: 30s.



Immunofluorescence analysis of H9C2 cells using YWHAE antibody (CAB1058) at dilution of 1:100. Blue: DAPI for nuclear staining.



Immunofluorescence analysis of L929 cells using YWHAE antibody (CAB1058) at dilution of 1:100. Blue: DAPI for nuclear staining.



Immunofluorescence analysis of U2OS cells using YWHAE antibody (CAB1058) at dilution of 1:100. Blue: DAPI for nuclear staining.