

MCM3 Rabbit Polyclonal Antibody



CAB1060

Product Information

Size:

20uL, 50uL, 100uL, 200uL

Observed MW:

105kDa

Calculated MW:

90kDa/95kDa

Applications:

WB IHC IF IP

Reactivity:

Human, Mouse, Rat

Protein Background

The protein encoded by this gene is one of the highly conserved mini-chromosome maintenance proteins (MCM) that are involved in the initiation of eukaryotic genome replication. The hexameric protein complex formed by MCM proteins is a key component of the pre-replication complex (pre_RC) and may be involved in the formation of replication forks and in the recruitment of other DNA replication related proteins. This protein is a subunit of the protein complex that consists of MCM2-7. It has been shown to interact directly with MCM5/CDC46. This protein also interacts with and is acetylated by MCM3AP, a chromatin-associated acetyltransferase. The acetylation of this protein inhibits the initiation of DNA replication and cell cycle progression. Two transcript variants encoding different isoforms have been found for this gene.

Immunogen information

Gene ID:

4172

Uniprot

P25205

Antibody Information

Recommended dilutions:

WB 1:500 - 1:2000 IHC 1:50
- 1:200 IF 1:50 - 1:200 IP
1:50 - 1:200

Source:

Rabbit

Isotype:

IgG

Purification:

Affinity purification

Synonyms:

MCM3; HCC5; P1-MCM3; P1.h; RLFB

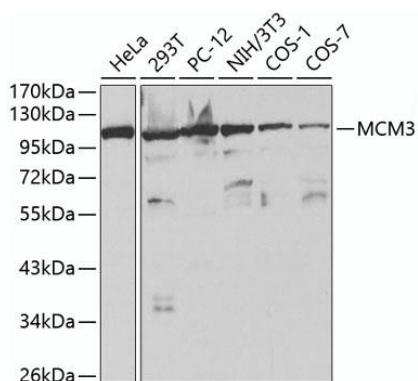
Immunogen:

Recombinant fusion protein containing a sequence corresponding to amino acids 1-295 of human MCM3 (NP_002379.2).

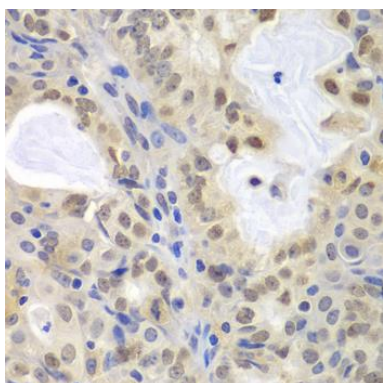
Storage:

Store at -20°C. Avoid freeze / thaw cycles. Buffer: PBS with 0.02% sodium azide, 50% glycerol, pH7.3.

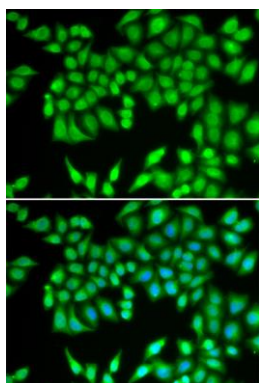
Product Images



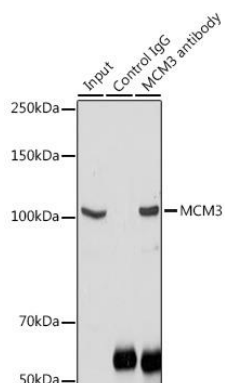
Western blot analysis of extracts of various cell lines, using MCM3 antibody (CAB1060) at 1:1000 dilution. Secondary antibody: HRP Goat Anti-Rabbit IgG (H+L) (CABS014) at 1:10000 dilution. Lysates/proteins: 25ug per lane. Blocking buffer: 3% nonfat dry milk in TBST.



Immunohistochemistry of paraffin-embedded human oophoroma using MCM3 antibody (CAB1060) at dilution of 1:100 (40x lens).



Immunofluorescence analysis of U2OS cells using MCM3 antibody (CAB1060). Blue: DAPI for nuclear staining.



Immunoprecipitation analysis of 300ug extracts of NIH/3T3 cells using 3ug MCM3 antibody (CAB1060). Western blot was performed from the immunoprecipitate using MCM3 antibody (CAB1060) at a dilution of 1:1000.