

GPHA2 Rabbit Polyclonal Antibody



CAB10601

Product Information

Size:

20uL, 50uL, 100uL, 200uL

Observed MW:

14kDa

Calculated MW:

14kDa

Applications:

WB

Reactivity:

Rat

Antibody Information

Recommended dilutions:

WB 1:500 - 1:1000

Source:

Rabbit

Isotype:

IgG

Purification:

Affinity purification

Protein Background

Immunogen information

Gene ID:

170589

Uniprot

Q96T91

Synonyms:

GPHA2; A2; GPA2; ZSIG51

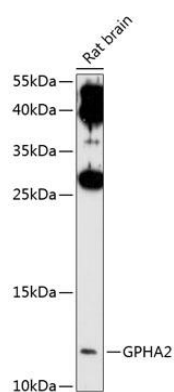
Immunogen:

Recombinant fusion protein containing a sequence corresponding to amino acids 24-129 of human GPHA2 (NP_570125.1).

Storage:

Store at -20°C. Avoid freeze / thaw cycles. Buffer: PBS with 0.02% sodium azide, 50% glycerol, pH7.3.

Product Images



Western blot analysis of extracts of rat brain, using GPHA2 antibody (CAB10601) at 1:1000 dilution. Secondary antibody: HRP Goat Anti-Rabbit IgG (H+L) (CABS014) at 1:10000 dilution. Lysates/proteins: 25ug per lane. Blocking buffer: 3% nonfat dry milk in TBST. Detection: ECL Enhanced Kit (CABM00021). Exposure time: 30s.