

# NF-kB p65 Mouse Monoclonal Antibody



CAB10609

---

## Product Information

### Size:

50uL, 100uL, 200uL

### Observed MW:

70kDa

### Calculated MW:

58kDa/59kDa/60kDa

### Applications:

WB IHC IF IP

### Reactivity:

Human, Mouse, Rat

## Protein Background

NF-kappa-B is a ubiquitous transcription factor involved in several biological processes. It is held in the cytoplasm in an inactive state by specific inhibitors. Upon degradation of the inhibitor, NF-kappa-B moves to the nucleus and activates transcription of specific genes. NF-kappa-B is composed of NFKB1 or NFKB2 bound to either REL, RELA, or RELB. The most abundant form of NF-kappa-B is NFKB1 complexed with the product of this gene, RELA. Four transcript variants encoding different isoforms have been found for this gene.

## Immunogen information

### Gene ID:

5970

### Uniprot

Q04206

### Synonyms:

NFKB3; p65; NF-kB p65; RELA; CMCU

## Antibody Information

### Recommended dilutions:

WB 1:500 - 1:2000 IHC 1:50  
- 1:200 IF 1:50 - 1:100 IP  
1:20 - 1:50

### Source:

Mouse

### Isotype:

IgG

### Purification:

Affinity purification

### Immunogen:

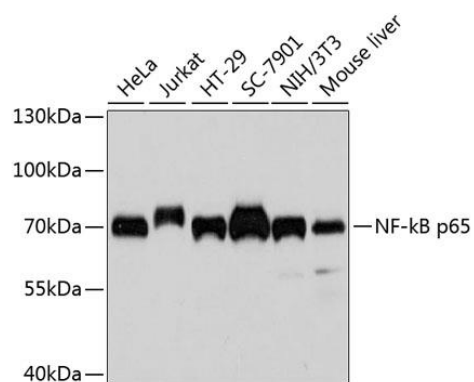
Recombinant protein of human NF-kB p65

### Storage:

Store at -20°C. Avoid freeze / thaw cycles. Buffer: PBS with 0.02% sodium azide, 50% glycerol, pH7.3.

## Product Images

---



Western blot analysis of extracts of various cell lines, using NF-kB p65 antibody (CAB10609) at 1:1000 dilution. Secondary antibody: HRP Goat Anti-Mouse IgG (H+L) (CABS003) at 1:10000 dilution. Lysates/proteins: 25ug per lane. Blocking buffer: 3% nonfat dry milk in TBST. Detection: ECL Basic Kit (CABM00020). Exposure time: 90s.