

PPP3CA Rabbit Polyclonal Antibody



CAB1063

Product Information

Size:

20uL, 50uL, 100uL, 200uL

Observed MW:

57kDa

Calculated MW:

31kDa/51kDa/52kDa/57kDa/
58kDa

Applications:

WB IF

Reactivity:

Human, Mouse

Antibody Information

Recommended dilutions:

WB 1:500 - 1:2000 IF 1:50 -
1:200

Source:

Rabbit

Isotype:

IgG

Purification:

Affinity purification

Protein Background

Immunogen information

Gene ID:

5530

Uniprot

Q08209

Synonyms:

PPP3CA; CALN; CALNA; CALNA1; CCN1; CNA1; PPP2B

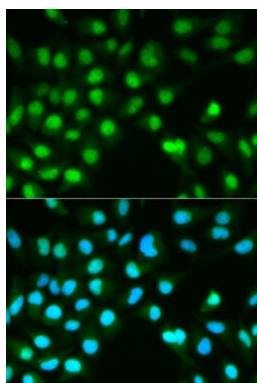
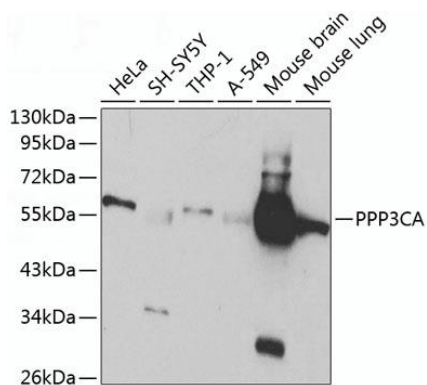
Immunogen:

Recombinant fusion protein containing a sequence corresponding to amino acids 1-511 of human PPP3CA (NP_001124163.1).

Storage:

Store at -20°C. Avoid freeze / thaw cycles. Buffer: PBS with 0.02% sodium azide, 50% glycerol, pH7.3.

Product Images



Western blot analysis of extracts of various cell lines, using PPP3CA antibody (CAB1063) at 1:1000 dilution. Secondary antibody: HRP Goat Anti-Rabbit IgG (H+L) (CABS014) at 1:10000 dilution. Lysates/proteins: 25ug per lane. Blocking buffer: 3% nonfat dry milk in TBST.

Immunofluorescence analysis of HeLa cells using PPP3CA antibody (CAB1063). Blue: DAPI for nuclear staining.