

TDGF1 Rabbit Polyclonal Antibody



CAB1065

Product Information

Size:

20uL, 50uL, 100uL, 200uL

Observed MW:

17kDa, 21kDa

Calculated MW:

21kDa

Applications:

WB IHC

Reactivity:

Human, Mouse, Rat

Protein Background

This gene encodes an epidermal growth factor-related protein that contains a cripto, FRL-1, and cryptic domain. The encoded protein is an extracellular, membrane-bound signaling protein that plays an essential role in embryonic development and tumor growth. Mutations in this gene are associated with forebrain defects. Pseudogenes of this gene are found on chromosomes 2, 3, 6, 8, 19 and X. Alternate splicing results in multiple transcript variants.

Immunogen information

Gene ID:

6997

Uniprot

P13385

Synonyms:

TDGF1; CR; CRGF; CRIPTO

Antibody Information

Recommended dilutions:

WB 1:500 - 1:2000 IHC 1:50
- 1:200

Source:

Rabbit

Isotype:

IgG

Purification:

Affinity purification

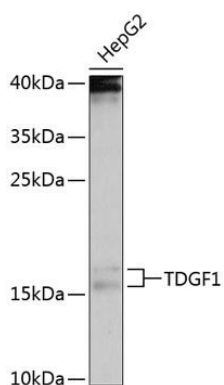
Immunogen:

Recombinant fusion protein containing a sequence corresponding to amino acids 1-188 of human TDGF1 (NP_003203.1).

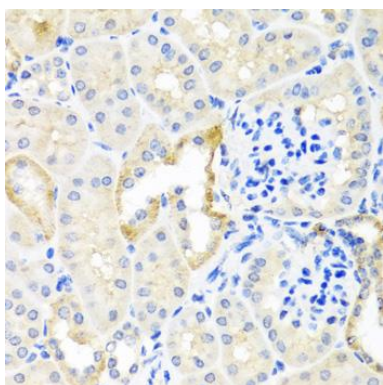
Storage:

Store at -20°C. Avoid freeze / thaw cycles. Buffer: PBS with 0.02% sodium azide, 50% glycerol, pH7.3.

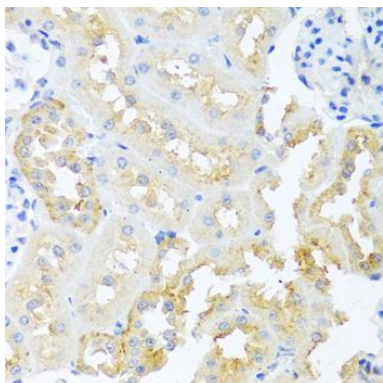
Product Images



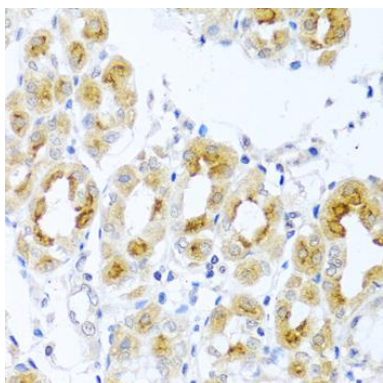
Western blot analysis of extracts of HepG2 cells, using TDGF1 antibody (CAB1065) at 1:1000 dilution. Secondary antibody: HRP Goat Anti-Rabbit IgG (H+L) (CABS014) at 1:10000 dilution. Lysates/proteins: 25ug per lane. Blocking buffer: 3% nonfat dry milk in TBST. Detection: ECL Enhanced Kit (CABM00021). Exposure time: 90s.



Immunohistochemistry of paraffin-embedded mouse kidney using TDGF1 antibody (CAB1065) at dilution of 1:100 (40x lens).



Immunohistochemistry of paraffin-embedded rat kidney using TDGF1 antibody (CAB1065) at dilution of 1:100 (40x lens).



Immunohistochemistry of paraffin-embedded human stomach using TDGF1 antibody (CAB1065) at dilution of 1:100 (40x lens).