

CYBA Rabbit Polyclonal Antibody



CAB10694

Product Information

Size:

20uL, 50uL, 100uL, 200uL

Observed MW:

Calculated MW:

21kDa

Applications:

IHC IF

Reactivity:

Human

Antibody Information

Recommended dilutions:

IHC 1:50 - 1:200 IF 1:50 - 1:100

Source:

Rabbit

Isotype:

IgG

Purification:

Affinity purification

Protein Background

Cytochrome b is comprised of a light chain (alpha) and a heavy chain (beta). This gene encodes the light, alpha subunit which has been proposed as a primary component of the microbicidal oxidase system of phagocytes. Mutations in this gene are associated with autosomal recessive chronic granulomatous disease (CGD), that is characterized by the failure of activated phagocytes to generate superoxide, which is important for the microbicidal activity of these cells.

Immunogen information

Gene ID:

1535

Uniprot

P13498

Synonyms:

CYBA; p22-PHOX

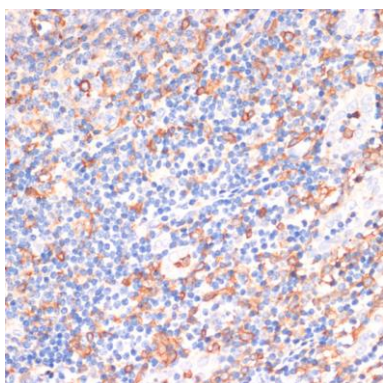
Immunogen:

Recombinant fusion protein containing a sequence corresponding to amino acids 126-195 of human CYBA (NP_000092.2).

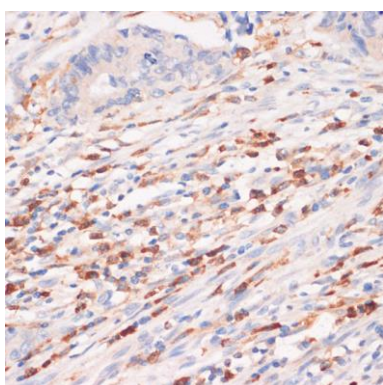
Storage:

Store at -20°C. Avoid freeze / thaw cycles. Buffer: PBS with 0.02% sodium azide, 50% glycerol, pH7.3.

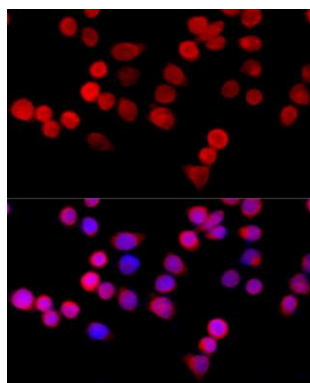
Product Images



Immunohistochemistry of paraffin-embedded human tonsil using CYBA antibody (CAB10694) at dilution of 1:100 (40x lens).



Immunohistochemistry of paraffin-embedded human colon carcinoma using CYBA antibody (CAB10694) at dilution of 1:100 (40x lens).



Immunofluorescence analysis of HeLa cells using CYBA antibody (CAB10694) at dilution of 1:100 (40x lens). Blue: DAPI for nuclear staining.