

# CACNA1H Rabbit Polyclonal Antibody



CAB10697

## Product Information

### Size:

20uL, 50uL, 100uL, 200uL

### Observed MW:

259kDa

### Calculated MW:

259kDa

### Applications:

IF/ICC

### Reactivity:

Mouse

### Category:

Primary antibody

## Protein Background

This gene encodes a T-type member of the alpha-1 subunit family, a protein in the voltage-dependent calcium channel complex. Calcium channels mediate the influx of calcium ions into the cell upon membrane polarization and consist of a complex of alpha-1, alpha-2/delta, beta, and gamma subunits in a 1:1:1:1 ratio. The alpha-1 subunit has 24 transmembrane segments and forms the pore through which ions pass into the cell. There are multiple isoforms of each of the proteins in the complex, either encoded by different genes or the result of alternative splicing of transcripts. Alternate transcriptional splice variants, encoding different isoforms, have been characterized for the gene described here. Studies suggest certain mutations in this gene lead to childhood absence epilepsy (CAE).

## Immunogen information

### Gene ID:

8912

### Uniprot

O95180

### Synonyms:

ECA6; EIG6; HALD4; Cav3.2; CACNA1HB

## Antibody Information

### Recommended dilutions:

IF/ICC 1:50 - 1:200

### Source:

Rabbit

### Isotype:

IgG

### Purification:

Affinity purification

### Immunogen:

Recombinant fusion protein containing a sequence corresponding to amino acids 260-360 of human CACNA1H (NP\_066921.2).

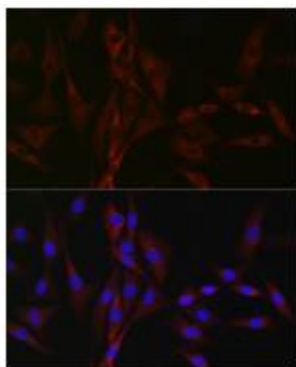
### Storage:

Store at -20°C. Avoid freeze / thaw cycles.

Buffer: PBS with 0.05% proclin300,50% glycerol,pH7.3.

## Product Images

---



Immunofluorescence analysis of NIH/3T3 cells using CACNA1H Rabbit pAb (CAB10697) at dilution of 1:100 (40x lens). Blue: DAPI for nuclear staining.