

CSRP1 Rabbit Polyclonal Antibody



CAB1071

Product Information

Size:

20uL, 50uL, 100uL, 200uL

Observed MW:

21kDa

Calculated MW:

20kDa

Applications:

WB IP RIP

Reactivity:

Human, Mouse

Protein Background

This gene encodes a member of the cysteine-rich protein (CSRP) family. This gene family includes a group of LIM domain proteins, which may be involved in regulatory processes important for development and cellular differentiation. The LIM/double zinc-finger motif found in this gene product occurs in proteins with critical functions in gene regulation, cell growth, and somatic differentiation. Alternatively spliced transcript variants have been described.

Immunogen information

Gene ID:

1465

Uniprot

P21291

Synonyms:

CSRP1; CRP; CRP1; CSRP; CYRP; D1S181E; HEL-141; HEL-S-286

Antibody Information

Recommended dilutions:

WB 1:500 - 1:2000 IP 1:50 -
1:200 RIP 1:20 - 1:50

Source:

Rabbit

Isotype:

IgG

Purification:

Affinity purification

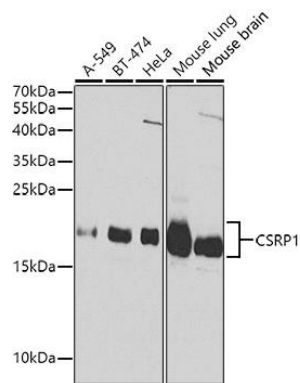
Immunogen:

Recombinant fusion protein containing a sequence corresponding to amino acids 1-193 of human CSRP1 (NP_004069.1).

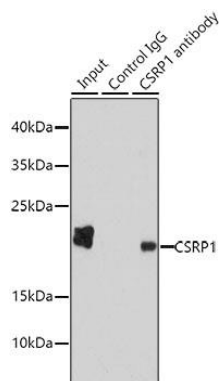
Storage:

Store at -20°C. Avoid freeze / thaw cycles. Buffer: PBS with 0.02% sodium azide, 50% glycerol, pH7.3.

Product Images



Western blot analysis of extracts of various cell lines, using CSRP1 Antibody (CAB1071) at 1:1000 dilution. Secondary antibody: HRP Goat Anti-Rabbit IgG (H+L) (CABS014) at 1:10000 dilution. Lysates/proteins: 25ug per lane. Blocking buffer: 3% nonfat dry milk in TBST. Detection: ECL Basic Kit (CABM00020).



Immunoprecipitation analysis of 200ug extracts of HepG2 cells using 1ug CSRP1 antibody (CAB1071). Western blot was performed from the immunoprecipitate using CSRP1 antibody (CAB1071) at a dilution of 1:1000.