

C17orf74 Rabbit Polyclonal Antibody



CAB10725

Product Information

Size:

20uL, 50uL, 100uL, 200uL

Observed MW:

65kDa

Calculated MW:

56kDa

Applications:

WB IF

Reactivity:

Human, Mouse, Rat

Antibody Information

Recommended dilutions:

WB 1:500 - 1:2000 IF 1:50 - 1:200

Source:

Rabbit

Isotype:

IgG

Purification:

Affinity purification

Protein Background

Immunogen information

Gene ID:

201243

Uniprot

Q0P670

Synonyms:

C17orf74

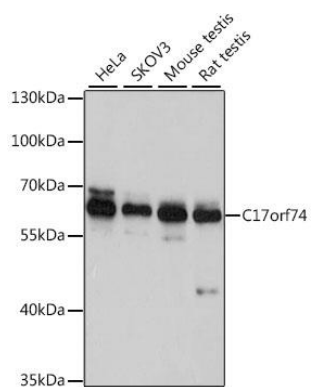
Immunogen:

A synthetic peptide corresponding to a sequence within amino acids 1-100 of human C17orf74 (NP_783861.3).

Storage:

Store at -20°C. Avoid freeze / thaw cycles. Buffer: PBS with 0.02% sodium azide, 50% glycerol, pH7.3.

Product Images



Western blot - C17orf74 Rabbit pAb (CAB10725)