

RNASE13 Rabbit Polyclonal Antibody



CAB1073

Product Information

Size:

20uL, 50uL, 100uL, 200uL

Observed MW:

18kDa

Calculated MW:

17kDa

Applications:

WB IHC IF

Reactivity:

Human, Mouse, Rat

Antibody Information

Recommended dilutions:

WB 1:500 - 1:2000 IHC

1:100 - 1:200 IF 1:10 -

1:100

Source:

Rabbit

Isotype:

IgG

Purification:

Affinity purification

Protein Background

Immunogen information

Gene ID:

440163

Uniprot

Q5GAN3

Synonyms:

RNASE13; HEL-S-86p; RAL1

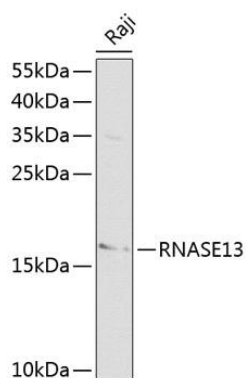
Immunogen:

Recombinant fusion protein containing a sequence corresponding to amino acids 1-156 of human RNASE13 (NP_001012264.1).

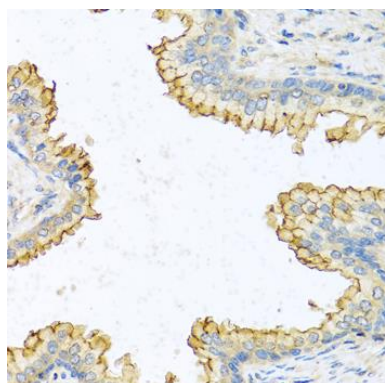
Storage:

Store at -20°C. Avoid freeze / thaw cycles. Buffer: PBS with 0.02% sodium azide, 50% glycerol, pH7.3.

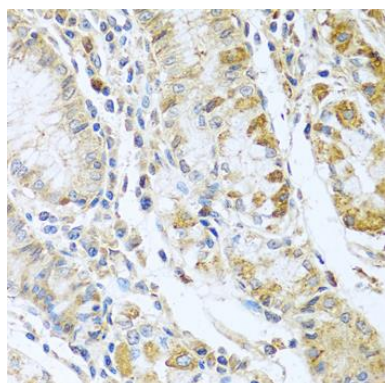
Product Images



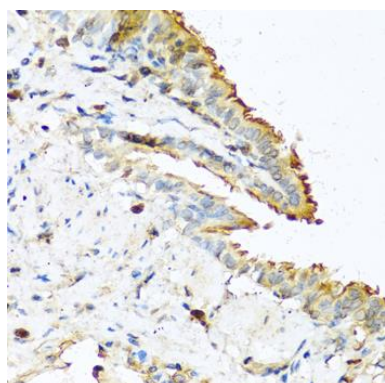
Western blot analysis of extracts of Raji cells, using RNASE13 antibody (CAB1073) at 1:1000 dilution. Secondary antibody: HRP Goat Anti-Rabbit IgG (H+L) (CABS014) at 1:10000 dilution. Lysates/proteins: 25ug per lane. Blocking buffer: 3% nonfat dry milk in TBST.



Immunohistochemistry of paraffin-embedded human prostate using RNASE13 antibody (CAB1073) at dilution of 1:100 (40x lens).



Immunohistochemistry of paraffin-embedded human stomach using RNASE13 antibody (CAB1073) at dilution of 1:100 (40x lens).



Immunohistochemistry of paraffin-embedded mouse lung using RNASE13 antibody (CAB1073) at dilution of 1:100 (40x lens).