

POLR3A Rabbit Polyclonal Antibody



CAB10737

Product Information

Size:

20uL, 50uL, 100uL, 200uL

Observed MW:

156kDa

Calculated MW:

155kDa

Applications:

WB IHC

Reactivity:

Human, Rat

Protein Background

The protein encoded by this gene is the catalytic component of RNA polymerase III, which synthesizes small RNAs. The encoded protein also acts as a sensor to detect foreign DNA and trigger an innate immune response.

Immunogen information

Gene ID:

11128

Uniprot

O14802

Synonyms:

POLR3A; ADDH; HLD7; RPC1; RPC155; hRPC155

Antibody Information

Recommended dilutions:

WB 1:500 - 1:2000 IHC

1:100 - 1:200

Source:

Rabbit

Isotype:

IgG

Purification:

Affinity purification

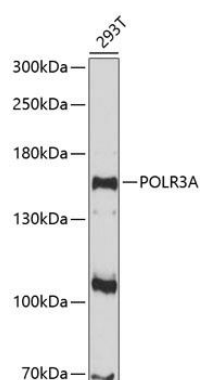
Immunogen:

Recombinant fusion protein containing a sequence corresponding to amino acids 1-200 of human POLR3A (NP_008986.2).

Storage:

Store at -20°C. Avoid freeze / thaw cycles. Buffer: PBS with 0.02% sodium azide, 50% glycerol, pH7.3.

Product Images



Western blot analysis of extracts of 293T cells, using POLR3A antibody (CAB10737) at 1:1000 dilution. Secondary antibody: HRP Goat Anti-Rabbit IgG (H+L) (CABS014) at 1:10000 dilution. Lysates/proteins: 25ug per lane. Blocking buffer: 3% nonfat dry milk in TBST. Detection: ECL Enhanced Kit (CABM00021). Exposure time: 90s.