

KLK14 Rabbit Polyclonal Antibody



CAB10767

Product Information

Size:

20uL, 50uL, 100uL, 200uL

Observed MW:

29kDa

Calculated MW:

29kDa

Applications:

WB

Reactivity:

Mouse

Antibody Information

Recommended dilutions:

WB 1:500 - 1:2000

Source:

Rabbit

Isotype:

IgG

Purification:

Affinity purification

Protein Background

This gene encodes a member of the kallikrein subfamily of serine proteases that have diverse physiological functions such as regulation of blood pressure and desquamation. The altered expression of this gene is implicated in the progression of different cancers including breast and prostate tumors. The encoded protein is a precursor that is proteolytically processed to generate the functional enzyme. This gene is one of the fifteen kallikrein subfamily members located in a cluster on chromosome 19. Alternative splicing results in multiple transcript variants.

Immunogen information

Gene ID:

43847

Uniprot

Q9P0G3

Synonyms:

KLK14; KLK-L6

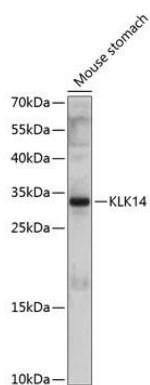
Immunogen:

Recombinant fusion protein containing a sequence corresponding to amino acids 41-267 of human KLK14 (NP_071329.2).

Storage:

Store at -20°C. Avoid freeze / thaw cycles. Buffer: PBS with 0.02% sodium azide, 50% glycerol, pH7.3.

Product Images



Western blot analysis of extracts of mouse stomach, using KLK14 antibody (CAB10767) at 1:1000 dilution. Secondary antibody: HRP Goat Anti-Rabbit IgG (H+L) (CABS014) at 1:10000 dilution. Lysates/proteins: 25ug per lane. Blocking buffer: 3% nonfat dry milk in TBST. Detection: ECL Basic Kit (CABM00020). Exposure time: 10s.