

CUL3 Rabbit Polyclonal Antibody



CAB1078

Product Information

Size:

20uL, 50uL, 100uL, 200uL

Observed MW:

89-95kDa

Calculated MW:

81kDa/86kDa/88kDa

Applications:

WB IHC IF

Reactivity:

Human, Mouse, Rat

Protein Background

This gene encodes a member of the cullin protein family. The encoded protein plays a critical role in the polyubiquitination and subsequent degradation of specific protein substrates as the core component and scaffold protein of an E3 ubiquitin ligase complex. Complexes including the encoded protein may also play a role in late endosome maturation. Mutations in this gene are a cause of type 2E pseudohypoaldosteronism. Alternatively spliced transcript variants encoding multiple isoforms have been observed for this gene.

Immunogen information

Gene ID:

8452

Uniprot

Q13618

Synonyms:

CUL-3; PHA2E; CUL3; Cullin 3; cullin-3

Antibody Information

Recommended dilutions:

WB 1:500 - 1:2000 IHC 1:50
- 1:100 IF 1:50 - 1:200

Source:

Rabbit

Isotype:

IgG

Purification:

Affinity purification

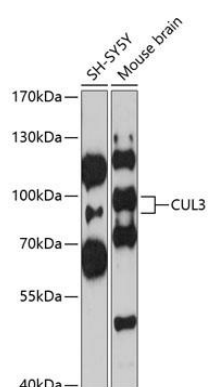
Immunogen:

Recombinant fusion protein containing a sequence corresponding to amino acids 569-768 of human CUL3 (NP_003581.1).

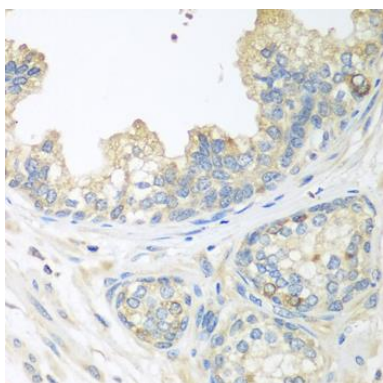
Storage:

Store at -20°C. Avoid freeze / thaw cycles. Buffer: PBS with 0.02% sodium azide, 50% glycerol, pH7.3.

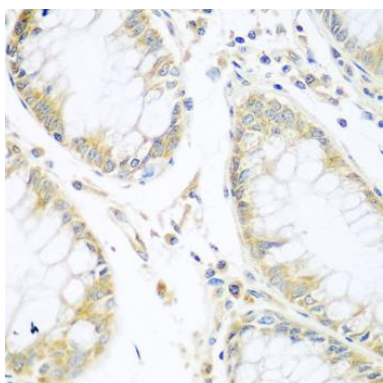
Product Images



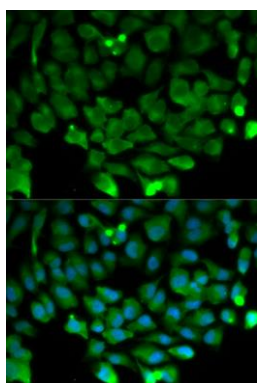
Western blot analysis of extracts of various cell lines, using CUL3 antibody (CAB1078) at 1:1000 dilution. Secondary antibody: HRP Goat Anti-Rabbit IgG (H+L) (CABS014) at 1:10000 dilution. Lysates/proteins: 25ug per lane. Blocking buffer: 3% nonfat dry milk in TBST. Detection: ECL Enhanced Kit (CABM00021). Exposure time: 90s.



Immunohistochemistry of paraffin-embedded human prostate using CUL3 antibody (CAB1078) at dilution of 1:100 (40x lens).



Immunohistochemistry of paraffin-embedded human gastric cancer using CUL3 antibody (CAB1078) at dilution of 1:100 (40x lens).



Immunofluorescence analysis of HeLa cells using CUL3 antibody (CAB1078). Blue: DAPI for nuclear staining.