

NTF4 Rabbit Polyclonal Antibody



CAB1081

Product Information

Size:

20uL, 50uL, 100uL, 200uL

Observed MW:

22kDa

Calculated MW:

22kDa

Applications:

WB IHC

Reactivity:

Human, Rat

Protein Background

This gene is a member of a family of neurotrophic factors, neurotrophins, that control survival and differentiation of mammalian neurons. The expression of this gene is ubiquitous and less influenced by environmental signals. While knock-outs of other neurotrophins including nerve growth factor, brain-derived neurotrophic factor, and neurotrophin 3 prove lethal during early postnatal development, NTF5-deficient mice only show minor cellular deficits and develop normally to adulthood.

Immunogen information

Gene ID:

4909

Uniprot

P34130

Synonyms:

NTF4; GLC10; GLC10; NT-4; NT-4/5; NT-5; NT4; NT5; NTF5

Antibody Information

Recommended dilutions:

WB 1:500 - 1:2000 IHC

1:100 - 1:200

Source:

Rabbit

Isotype:

IgG

Purification:

Affinity purification

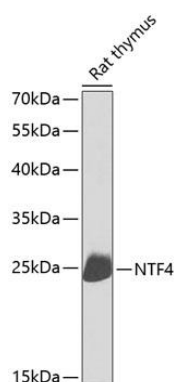
Immunogen:

Recombinant fusion protein containing a sequence corresponding to amino acids 25-210 of human NTF4 (NP_006170.1).

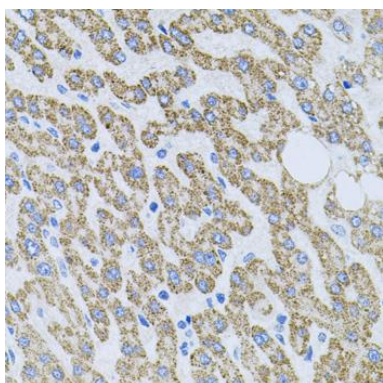
Storage:

Store at -20°C. Avoid freeze / thaw cycles. Buffer: PBS with 0.02% sodium azide, 50% glycerol, pH7.3.

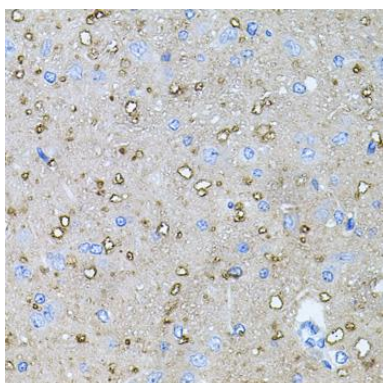
Product Images



Western blot analysis of extracts of rat thymus, using NTF4 antibody (CAB1081) at 1:1000 dilution. Secondary antibody: HRP Goat Anti-Rabbit IgG (H+L) (CABS014) at 1:10000 dilution. Lysates/proteins: 25ug per lane. Blocking buffer: 3% nonfat dry milk in TBST. Detection: ECL Enhanced Kit (CABM00021). Exposure time: 10s.



Immunohistochemistry of paraffin-embedded human liver damage using NTF4 antibody (CAB1081) at dilution of 1:100 (40x lens).



Immunohistochemistry of paraffin-embedded rat brain using NTF4 antibody (CAB1081) at dilution of 1:100 (40x lens).