

SDHB Rabbit Polyclonal Antibody



CAB10821

Product Information

Size:

20uL, 50uL, 100uL, 200uL

Observed MW:

32kDa

Calculated MW:

31kDa

Applications:

WB IHC IF

Reactivity:

Human, Mouse, Rat

Protein Background

Complex II of the respiratory chain, which is specifically involved in the oxidation of succinate, carries electrons from FADH to CoQ. The complex is composed of four nuclear-encoded subunits and is localized in the mitochondrial inner membrane. The iron-sulfur subunit is highly conserved and contains three cysteine-rich clusters which may comprise the iron-sulfur centers of the enzyme. Sporadic and familial mutations in this gene result in paragangliomas and pheochromocytoma, and support a link between mitochondrial dysfunction and tumorigenesis.

Immunogen information

Gene ID:

6390

Uniprot

P21912

Synonyms:

SDHB; CWS2; IP; PGL4; SDH; SDH1; SDH2; SDHIP

Antibody Information

Recommended dilutions:

WB 1:500 - 1:2000 IHC 1:50
- 1:100 IF 1:50 - 1:200

Source:

Rabbit

Isotype:

IgG

Purification:

Affinity purification

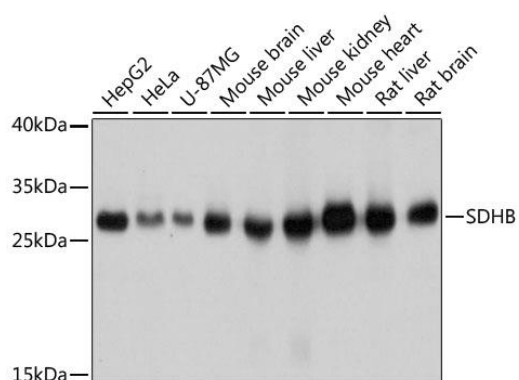
Immunogen:

Recombinant fusion protein containing a sequence corresponding to amino acids 29-280 of human SDHB (NP_002991.2).

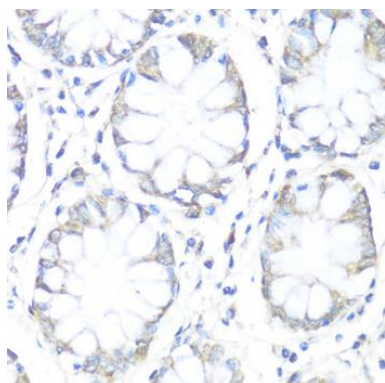
Storage:

Store at -20°C. Avoid freeze / thaw cycles. Buffer: PBS with 0.02% sodium azide, 50% glycerol, pH7.3.

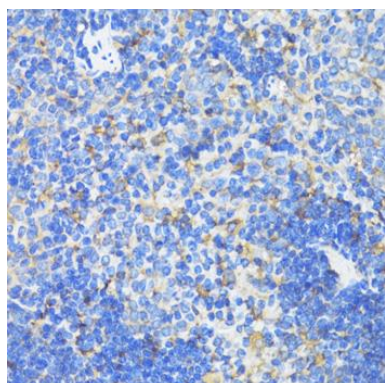
Product Images



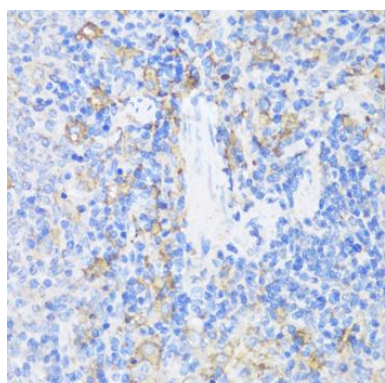
Western blot analysis of extracts of various cell lines, using SDHB antibody (CAB10821) at 1:1000 dilution. Secondary antibody: HRP Goat Anti-Rabbit IgG (H+L) (CABS014) at 1:10000 dilution. Lysates/proteins: 25ug per lane. Blocking buffer: 3% nonfat dry milk in TBST. Detection: ECL Basic Kit (CABM00020). Exposure time: 1s.



Immunohistochemistry of paraffin-embedded human colon using SDHB antibody (CAB10821) at dilution of 1:100 (40x lens).



Immunohistochemistry of paraffin-embedded mouse spleen using SDHB antibody (CAB10821) at dilution of 1:100 (40x lens).



Immunohistochemistry of paraffin-embedded rat spleen using SDHB antibody (CAB10821) at dilution of 1:100 (40x lens).