

MYT1 Rabbit Polyclonal Antibody



CAB10824

Product Information

Size:

20uL, 50uL, 100uL, 200uL

Observed MW:

122kDa

Calculated MW:

122kDa/125kDa

Applications:

WB

Reactivity:

Human, Mouse, Rat

Antibody Information

Recommended dilutions:

WB 1:500 - 1:2000

Source:

Rabbit

Isotype:

IgG

Purification:

Affinity purification

Protein Background

The protein encoded by this gene is a member of a family of neural specific, zinc finger-containing DNA-binding proteins. The protein binds to the promoter regions of proteolipid proteins of the central nervous system and plays a role in the developing nervous system.

Immunogen information

Gene ID:

4661

Uniprot

Q01538

Synonyms:

MYT1; C20orf36; MTF1; MYTI; NZF2; PLPB1; ZC2H2C1; ZC2HC4A

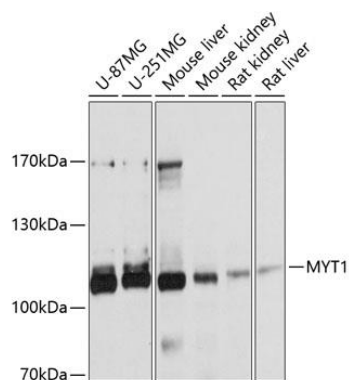
Immunogen:

Recombinant fusion protein containing a sequence corresponding to amino acids 650-820 of human MYT1 (NP_004526.1).

Storage:

Store at -20°C. Avoid freeze / thaw cycles. Buffer: PBS with 0.02% sodium azide, 50% glycerol, pH7.3.

Product Images



Western blot analysis of extracts of various cell lines, using MYT1 antibody (CAB10824) at 1:1000 dilution. Secondary antibody: HRP Goat Anti-Rabbit IgG (H+L) (CABS014) at 1:10000 dilution. Lysates/proteins: 25ug per lane. Blocking buffer: 3% nonfat dry milk in TBST. Detection: ECL Basic Kit (CABM00020). Exposure time: 5s.