

MAN1A1 Rabbit Polyclonal Antibody



CAB10830

Product Information

Size:

20uL, 50uL, 100uL, 200uL

Observed MW:

73kDa

Calculated MW:

40kDa/72kDa

Applications:

WB

Reactivity:

Human, Mouse, Rat

Protein Background

This gene encodes a class I mammalian Golgi 1, 2-mannosidase which is a type II transmembrane protein. This protein catalyzes the hydrolysis of three terminal mannose residues from peptide-bound Man(9)-GlcNAc(2) oligosaccharides and belongs to family 47 of glycosyl hydrolases.

Immunogen information

Gene ID:

4121

Uniprot

P33908

Synonyms:

MAN1A1; HUMM3; HUMM9; MAN9

Antibody Information

Recommended dilutions:

WB 1:500 - 1:2000

Source:

Rabbit

Isotype:

IgG

Purification:

Affinity purification

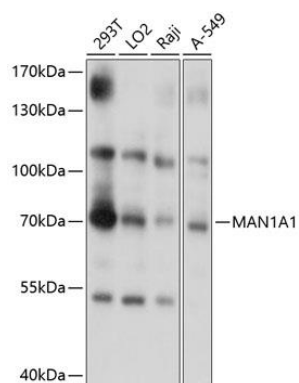
Immunogen:

Recombinant fusion protein containing a sequence corresponding to amino acids 70-190 of human MAN1A1 (NP_005898.2).

Storage:

Store at -20°C. Avoid freeze / thaw cycles. Buffer: PBS with 0.02% sodium azide, 50% glycerol, pH7.3.

Product Images



Western blot analysis of extracts of various cell lines, using MAN1A1 antibody (CAB10830) at 1:1000 dilution. Secondary antibody: HRP Goat Anti-Rabbit IgG (H+L) (CABS014) at 1:10000 dilution. Lysates/proteins: 25ug per lane. Blocking buffer: 3% nonfat dry milk in TBST. Detection: ECL Basic Kit (CABM00020). Exposure time: 1s.