

p38 MAPK Rabbit Polyclonal Antibody



CAB10832

Product Information

Size:

20uL, 50uL, 100uL, 200uL

Observed MW:

41kDa

Calculated MW:

29kDa/34kDa/35kDa/41kDa

Applications:

WB IHC

Reactivity:

Human, Mouse, Rat

Antibody Information

Recommended dilutions:

WB 1:500 - 1:2000 IHC 1:50
- 1:200

Source:

Rabbit

Isotype:

IgG

Purification:

Affinity purification

Protein Background

The protein encoded by this gene is a member of the MAP kinase family. MAP kinases act as an integration point for multiple biochemical signals, and are involved in a wide variety of cellular processes such as proliferation, differentiation, transcription regulation and development. This kinase is activated by various environmental stresses and proinflammatory cytokines. The activation requires its phosphorylation by MAP kinase kinases (MKKs), or its autophosphorylation triggered by the interaction of MAP3K7IP1/TAB1 protein with this kinase. The substrates of this kinase include transcription regulator ATF2, MEF2C, and MAX, cell cycle regulator CDC25B, and tumor suppressor p53, which suggest the roles of this kinase in stress related transcription and cell cycle regulation, as well as in genotoxic stress response. Four alternatively spliced transcript variants of this gene encoding distinct isoforms have been reported.

Immunogen information

Gene ID:

1432

Uniprot

Q16539

Synonyms:

MAPK14; CSBP; CSBP1; CSBP2; CSPB1; EXIP; Mxi2; PRKM14;
PRKM15; RK; SAPK2A; p38; p38ALPHA; p38 MAPK

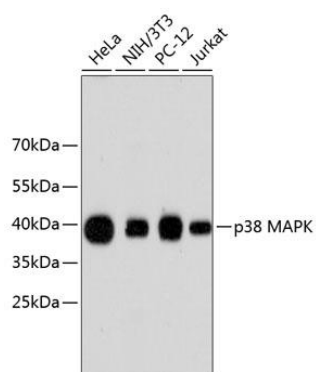
Immunogen:

A synthetic peptide corresponding to a sequence within amino acids 300 to the C-terminus of human p38 MAPK (NP_620581.1).

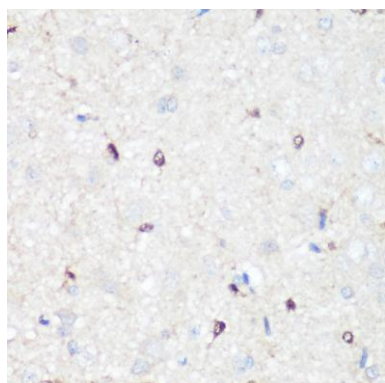
Storage:

Store at -20°C. Avoid freeze / thaw cycles. Buffer: PBS with 0.02% sodium azide, 50% glycerol, pH7.3.

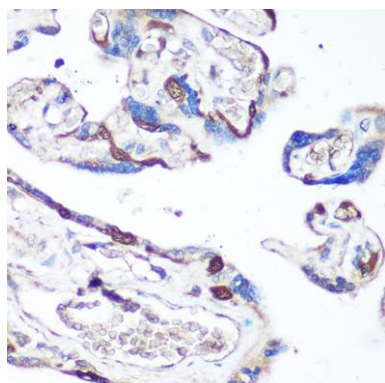
Product Images



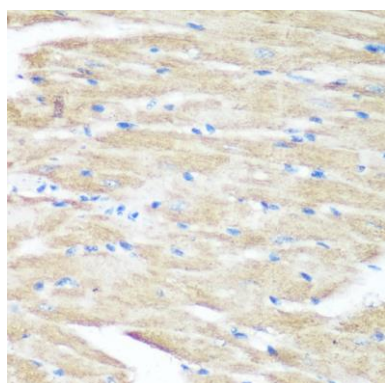
Western blot analysis of extracts of various cell lines, using p38 MAPK antibody (CAB10832). Secondary antibody: HRP Goat Anti-Rabbit IgG (H+L) (CABS014) at 1:10000 dilution. Lysates/proteins: 25ug per lane. Blocking buffer: 3% nonfat dry milk in TBST.



Immunohistochemistry of paraffin-embedded Rat brain using p38 MAPK antibody (CAB10832) at dilution of 1:100 (40x lens).



Immunohistochemistry of paraffin-embedded Human placenta using p38 MAPK antibody (CAB10832) at dilution of 1:100 (40x lens).



Immunohistochemistry of paraffin-embedded Mouse heart using p38 MAPK antibody (CAB10832) at dilution of 1:100 (40x lens).