

DES Rabbit Polyclonal Antibody



CAB10838

Product Information

Size:

20uL, 50uL, 100uL, 200uL

Observed MW:

54kDa

Calculated MW:

53kDa

Applications:

WB IHC

Reactivity:

Human, Mouse, Rat

Protein Background

This gene encodes a muscle-specific class III intermediate filament. Homopolymers of this protein form a stable intracytoplasmic filamentous network connecting myofibrils to each other and to the plasma membrane. Mutations in this gene are associated with desmin-related myopathy, a familial cardiac and skeletal myopathy (CSM), and with distal myopathies.

Immunogen information

Gene ID:

1674

Uniprot

P17661

Synonyms:

DES; CSM1; CSM2; LGMD2R; desmin; Desmin

Antibody Information

Recommended dilutions:

WB 1:500 - 1:2000 IHC 1:50
- 1:200

Source:

Rabbit

Isotype:

IgG

Purification:

Affinity purification

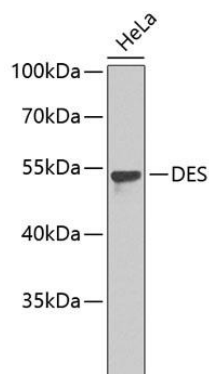
Immunogen:

Recombinant fusion protein containing a sequence corresponding to amino acids 121-470 of human DES (NP_001918.3).

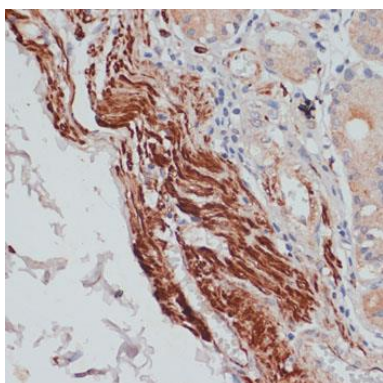
Storage:

Store at -20°C. Avoid freeze / thaw cycles. Buffer: PBS with 0.02% sodium azide, 50% glycerol, pH7.3.

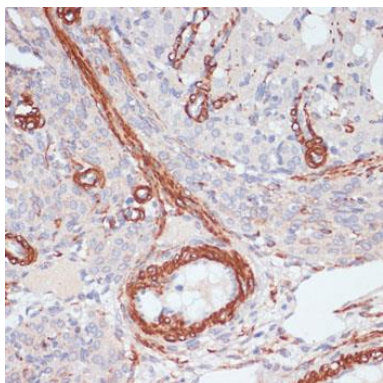
Product Images



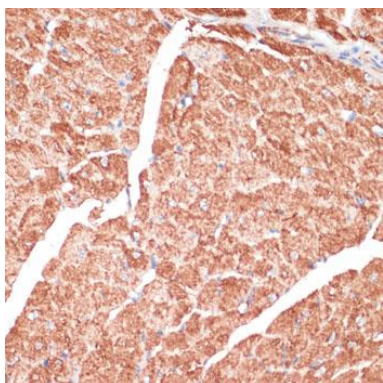
Western blot analysis of extracts of HeLa cells, using DES antibody (CAB10838).



Immunohistochemistry of paraffin-embedded human stomach using DES antibody (CAB10838) at dilution of 1:100 (40x lens).



Immunohistochemistry of paraffin-embedded rat ovary using DES antibody (CAB10838) at dilution of 1:100 (40x lens).



Immunohistochemistry of paraffin-embedded mouse heart using DES antibody (CAB10838) at dilution of 1:100 (40x lens).