

HSD17B1 Rabbit Polyclonal Antibody



CAB10839

Product Information

Size:

20uL, 50uL, 100uL, 200uL

Observed MW:

35kDa

Calculated MW:

34kDa

Applications:

WB IHC IF

Reactivity:

Human, Mouse, Rat

Antibody Information

Recommended dilutions:

WB 1:500 - 1:2000 IHC 1:50
- 1:200 IF 1:50 - 1:200

Source:

Rabbit

Isotype:

IgG

Purification:

Affinity purification

Protein Background

Immunogen information

Gene ID:

3292

Uniprot

P14061

Synonyms:

HSD17B1; 17-beta-HSD; 20-alpha-HSD; E2DH; EDH17B2; EDHB17;
HSD17; SDR28C1

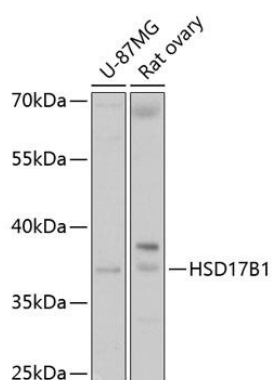
Immunogen:

Recombinant fusion protein containing a sequence corresponding to amino acids 1-328 of human HSD17B1 (NP_000404.2).

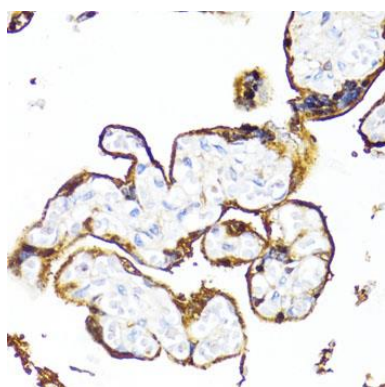
Storage:

Store at -20°C. Avoid freeze / thaw cycles. Buffer: PBS with 0.02% sodium azide, 50% glycerol, pH7.3.

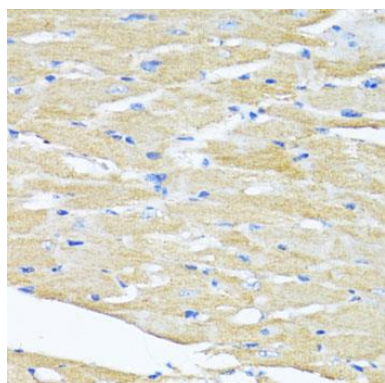
Product Images



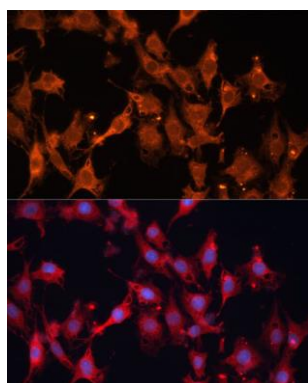
Western blot analysis of extracts of various cell lines, using HSD17B1 antibody (CAB10839) at 1:1000 dilution. Secondary antibody: HRP Goat Anti-Rabbit IgG (H+L) (CABS014) at 1:10000 dilution. Lysates/proteins: 25ug per lane. Blocking buffer: 3% nonfat dry milk in TBST. Detection: ECL Basic Kit (CABM00020). Exposure time: 5s.



Immunohistochemistry of paraffin-embedded human placenta using HSD17B1 antibody (CAB10839) at dilution of 1:100 (40x lens).



Immunohistochemistry of paraffin-embedded mouse heart using HSD17B1 antibody (CAB10839) at dilution of 1:100 (40x lens).



Immunofluorescence analysis of C6 cells using HSD17B1 Polyclonal Antibody (CAB10839) at dilution of 1:100 (40x lens). Blue: DAPI for nuclear staining.