

# PDIA3 Rabbit Polyclonal Antibody



CAB1085

## Product Information

### Size:

20uL, 50uL, 100uL, 200uL

### Observed MW:

57kDa

### Calculated MW:

56kDa

### Applications:

WB IHC IF

### Reactivity:

Human, Mouse, Rat

## Antibody Information

### Recommended dilutions:

WB 1:500 - 1:2000 IHC 1:50  
- 1:100 IF 1:50 - 1:100

### Source:

Rabbit

### Isotype:

IgG

### Purification:

Affinity purification

## Protein Background

This gene encodes a protein of the endoplasmic reticulum that interacts with lectin chaperones calreticulin and calnexin to modulate folding of newly synthesized glycoproteins. The protein was once thought to be a phospholipase; however, it has been demonstrated that the protein actually has protein disulfide isomerase activity. It is thought that complexes of lectins and this protein mediate protein folding by promoting formation of disulfide bonds in their glycoprotein substrates. This protein also functions as a molecular chaperone that prevents the formation of protein aggregates.

## Immunogen information

### Gene ID:

2923

### Uniprot

P30101

### Synonyms:

PDIA3; ER60; ERp57; ERp60; ERp61; GRP57; GRP58; HEL-S-269;  
HEL-S-93n; HsT17083; P58; PI-PLC

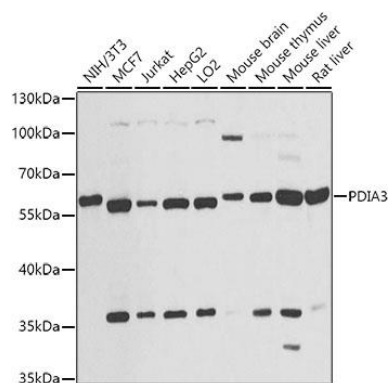
### Immunogen:

Recombinant fusion protein containing a sequence corresponding to amino acids 206-505 of human PDIA3 (NP\_005304.3).

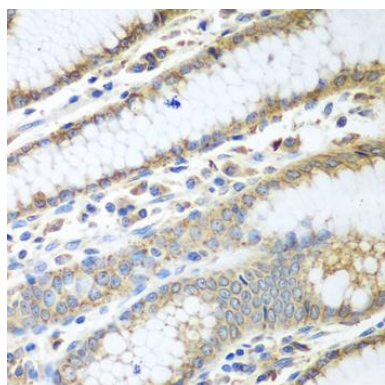
### Storage:

Store at -20°C. Avoid freeze / thaw cycles. Buffer: PBS with 0.02% sodium azide, 50% glycerol, pH7.3.

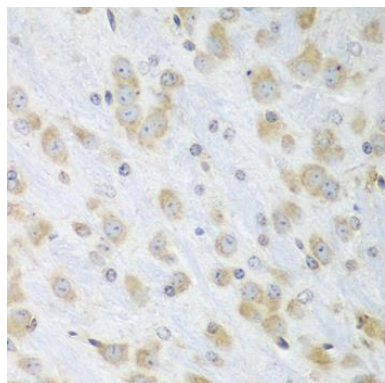
## Product Images



Western blot analysis of extracts of various cell lines, using PDIA3 antibody (CAB1085) at 1:1000 dilution. Secondary antibody: HRP Goat Anti-Rabbit IgG (H+L) (CABS014) at 1:10000 dilution. Lysates/proteins: 25ug per lane. Blocking buffer: 3% nonfat dry milk in TBST. Detection: ECL Basic Kit (CABM00020). Exposure time: 30s.



Immunohistochemistry of paraffin-embedded human stomach using PDIA3 antibody (CAB1085) at dilution of 1:100 (40x lens).



Immunohistochemistry of paraffin-embedded mouse brain using PDIA3 antibody (CAB1085) at dilution of 1:100 (40x lens).