

CSF1 Rabbit Polyclonal Antibody



CAB10854

Product Information

Size:

100uL, 200uL

Observed MW:

60kDa

Calculated MW:

29kDa/47kDa/60kDa

Applications:

WB IHC IF FC

Reactivity:

Human

Protein Background

The protein encoded by this gene is a cytokine that controls the production, differentiation, and function of macrophages. The active form of the protein is found extracellularly as a disulfide-linked homodimer, and is thought to be produced by proteolytic cleavage of membrane-bound precursors. The encoded protein may be involved in development of the placenta. Alternate splicing results in multiple transcript variants.

Immunogen information

Gene ID:

1435

Uniprot

P09603

Synonyms:

CSF1; CSF-1; MCSF

Antibody Information

Recommended dilutions:

WB 1:500 - 1:1000 IHC 1:50
- 1:200 IF 1:20 - 1:50 FC
1:20 - 1:50

Source:

Rabbit

Immunogen:

A synthetic peptide of human CSF1

Storage:

Store at -20°C. Avoid freeze / thaw cycles. Buffer: PBS with 0.02% sodium azide, 50% glycerol, pH7.3.

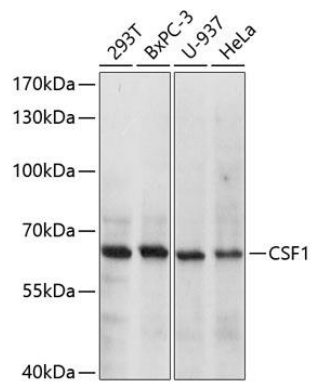
Isotype:

IgG

Purification:

Affinity purification

Product Images



Western blot analysis of extracts of various cell lines, using CSF1 antibody (CAB10854) at 1:1000 dilution. Secondary antibody: HRP Goat Anti-Rabbit IgG (H+L) (CABS014) at 1:10000 dilution. Lysates/proteins: 25ug per lane. Blocking buffer: 3% nonfat dry milk in TBST. Detection: ECL Basic Kit (CABM00020). Exposure time: 5s.