

PPP1CB Rabbit Polyclonal Antibody



CAB1088

Product Information

Size:

20uL, 50uL, 100uL, 200uL

Observed MW:

30-35kDa

Calculated MW:

37kDa

Applications:

WB IHC IF

Reactivity:

Human, Mouse, Rat

Protein Background

The protein encoded by this gene is one of the three catalytic subunits of protein phosphatase 1 (PP1). PP1 is a serine/threonine specific protein phosphatase known to be involved in the regulation of a variety of cellular processes, such as cell division, glycogen metabolism, muscle contractility, protein synthesis, and HIV-1 viral transcription. Mouse studies suggest that PP1 functions as a suppressor of learning and memory. Two alternatively spliced transcript variants encoding distinct isoforms have been observed.

Immunogen information

Gene ID:

5500

Uniprot

P62140

Synonyms:

PPP1CB; HEL-S-80p; PP-1B; PP1B; PP1beta; PPP1CD; NSLH2

Antibody Information

Recommended dilutions:

WB 1:500 - 1:2000 IHC 1:50
- 1:200 IF 1:50 - 1:200

Source:

Rabbit

Isotype:

IgG

Purification:

Affinity purification

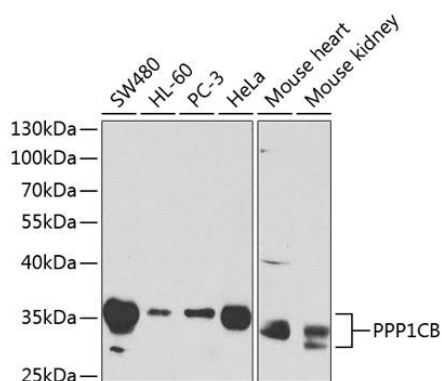
Immunogen:

Recombinant fusion protein containing a sequence corresponding to amino acids 1-327 of human PPP1CB (NP_002700.1).

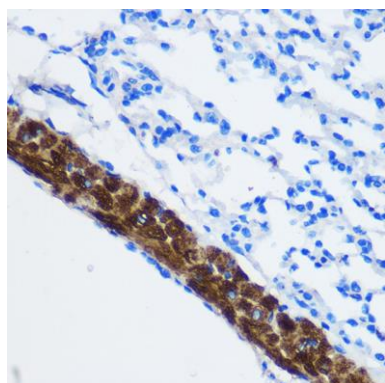
Storage:

Store at -20°C. Avoid freeze / thaw cycles. Buffer: PBS with 0.02% sodium azide, 50% glycerol, pH7.3.

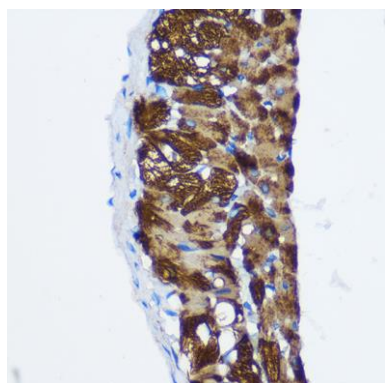
Product Images



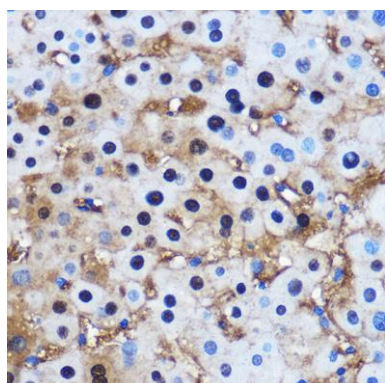
Western blot analysis of extracts of various cell lines, using PPP1CB antibody (CAB1088) at 1:1000 dilution. Secondary antibody: HRP Goat Anti-Rabbit IgG (H+L) (CABS014) at 1:10000 dilution. Lysates/proteins: 25ug per lane. Blocking buffer: 3% nonfat dry milk in TBST.



Immunohistochemistry of paraffin-embedded Mouse lung using PPP1CB Rabbit pAb (CAB1088) at dilution of 1:100 (40x lens).



Immunohistochemistry of paraffin-embedded Rat lung using PPP1CB Rabbit pAb (CAB1088) at dilution of 1:100 (40x lens).



Immunohistochemistry of paraffin-embedded Human liver using PPP1CB Rabbit pAb (CAB1088) at dilution of 1:100 (40x lens).