

# RNASE11 Rabbit Polyclonal Antibody



CAB1091

---

## Product Information

### Size:

20uL, 50uL, 100uL, 200uL

### Observed MW:

### Calculated MW:

22kDa

### Applications:

IHC

### Reactivity:

Human, Mouse

## Antibody Information

### Recommended dilutions:

IHC 1:50 - 1:100

### Source:

Rabbit

### Isotype:

IgG

### Purification:

Affinity purification

## Protein Background

### Immunogen information

#### Gene ID:

122651

#### Uniprot

Q8TAA1

#### Synonyms:

RNASE11; C14orf6; HEL-S-84p; RAJ1

#### Immunogen:

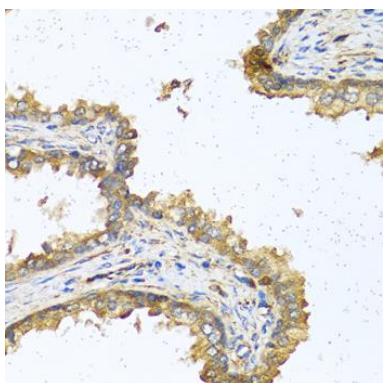
Recombinant fusion protein containing a sequence corresponding to amino acids 1-199 of human RNASE11 (NP\_660293.1).

#### Storage:

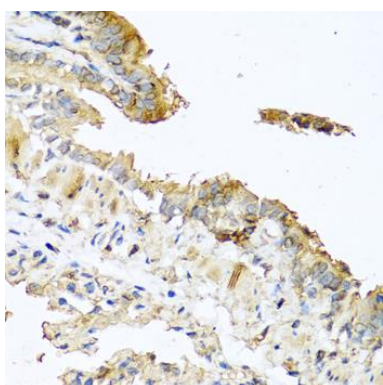
Store at -20°C. Avoid freeze / thaw cycles. Buffer: PBS with 0.02% sodium azide, 50% glycerol, pH7.3.

## Product Images

---



Immunohistochemistry of paraffin-embedded human prostate using RNASE11 antibody (CAB1091) at dilution of 1:100 (40x lens).



Immunohistochemistry of paraffin-embedded mouse lung using RNASE11 antibody (CAB1091) at dilution of 1:100 (40x lens).