

ATP2A2 / SERCA2 Rabbit Polyclonal Antibody



CAB1097

Product Information

Size:

20uL, 50uL, 100uL, 200uL

Observed MW:

115kDa

Calculated MW:

109kDa/111kDa/114kDa

Applications:

WB IHC IF

Reactivity:

Human, Mouse, Rat

Antibody Information

Recommended dilutions:

WB 1:500 - 1:2000 IHC 1:50
- 1:200 IF 1:10 - 1:100

Source:

Rabbit

Isotype:

IgG

Purification:

Affinity purification

Protein Background

This gene encodes one of the SERCA Ca²⁺-ATPases, which are intracellular pumps located in the sarcoplasmic or endoplasmic reticula of muscle cells. This enzyme catalyzes the hydrolysis of ATP coupled with the translocation of calcium from the cytosol into the sarcoplasmic reticulum lumen, and is involved in regulation of the contraction/relaxation cycle. Mutations in this gene cause Darier-White disease, also known as keratosis follicularis, an autosomal dominant skin disorder characterized by loss of adhesion between epidermal cells and abnormal keratinization. Alternative splicing results in multiple transcript variants encoding different isoforms.

Immunogen information

Gene ID:

488

Uniprot

P16615

Synonyms:

ATP2B; DAR; DD; SERCA2; ATP2A2/SERCA2; ATP2A2

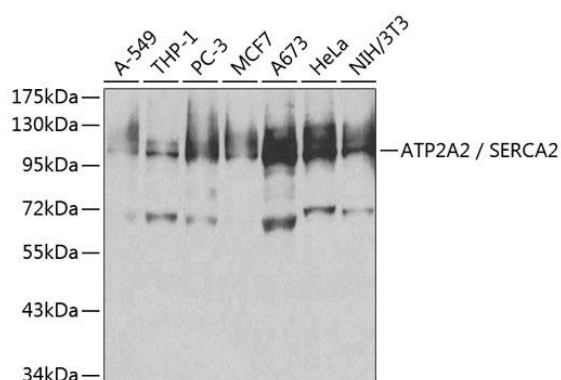
Immunogen:

Recombinant fusion protein containing a sequence corresponding to amino acids 111-253 of human ATP2A2 / SERCA2 (NP_733765.1).

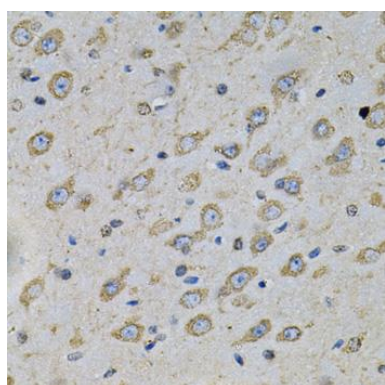
Storage:

Store at -20°C. Avoid freeze / thaw cycles. Buffer: PBS with 0.02% sodium azide, 50% glycerol, pH7.3.

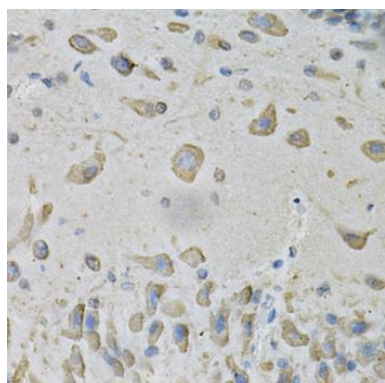
Product Images



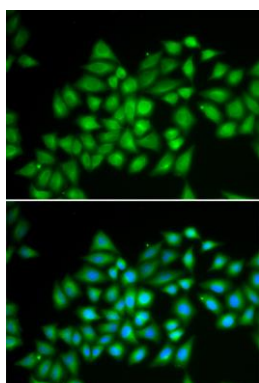
Western blot analysis of extracts of various cell lines, using ATP2A2 / SERCA2 antibody (CAB1097) at 1:500 dilution. Secondary antibody: HRP Goat Anti-Rabbit IgG (H+L) (CABS014) at 1:10000 dilution. Lysates/proteins: 25ug per lane. Blocking buffer: 3% nonfat dry milk in TBST.



Immunohistochemistry of paraffin-embedded rat brain using ATP2A2 / SERCA2 Antibody (CAB1097) at dilution of 1:100 (40x lens).



Immunohistochemistry of paraffin-embedded mouse brain using ATP2A2 / SERCA2 Antibody (CAB1097) at dilution of 1:100 (40x lens).



Immunofluorescence analysis of HeLa cells using ATP2A2 / SERCA2 antibody (CAB1097). Blue: DAPI for nuclear staining.