

# MTA2 Rabbit Polyclonal Antibody



CAB10980

## Product Information

### Size:

20uL, 50uL, 100uL, 200uL

### Observed MW:

Refer to Figures

### Calculated MW:

55kDa/75kDa

### Applications:

WB IHC

### Reactivity:

Human, Mouse

## Antibody Information

### Recommended dilutions:

WB 1:200 - 1:1000 IHC 1:50  
- 1:100

### Source:

Rabbit

### Isotype:

IgG

### Purification:

Affinity purification

## Protein Background

This gene encodes a protein that has been identified as a component of NuRD, a nucleosome remodeling deacetylase complex identified in the nucleus of human cells. It shows a very broad expression pattern and is strongly expressed in many tissues. It may represent one member of a small gene family that encode different but related proteins involved either directly or indirectly in transcriptional regulation. Their indirect effects on transcriptional regulation may include chromatin remodeling. It is closely related to another member of this family, a protein that has been correlated with the metastatic potential of certain carcinomas. These two proteins are so closely related that they share the same types of domains. These domains include two DNA binding domains, a dimerization domain, and a domain commonly found in proteins that methylate DNA. One of the proteins known to be a target protein for this gene product is p53. Deacetylation of p53 is correlated with a loss of growth inhibition in transformed cells supporting a connection between these gene family members and metastasis.

## Immunogen information

### Gene ID:

9219

### Uniprot

O94776

### Synonyms:

MTA2; MTA1L1; PID

### Immunogen:

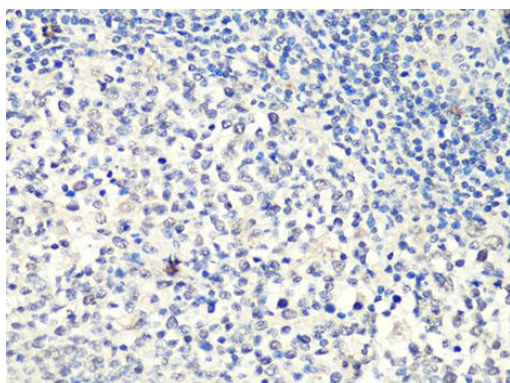
A synthetic peptide of human MTA2

### Storage:

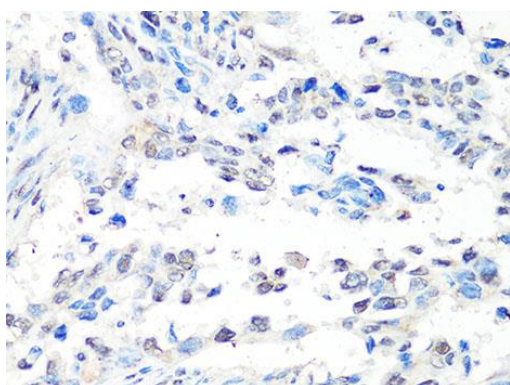
Store at -20°C. Avoid freeze / thaw cycles. Buffer: PBS with 0.02% sodium azide, 50% glycerol, pH7.3.

## Product Images

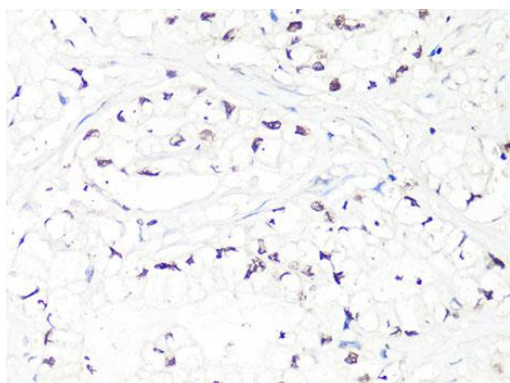
---



Immunohistochemistry of paraffin-embedded human tonsil using MTA2 Antibody (CAB10980) at dilution of 1:100 (40x lens).



Immunohistochemistry of paraffin-embedded human lung cancer using MTA2 Antibody (CAB10980) at dilution of 1:100 (40x lens).



Immunohistochemistry of paraffin-embedded human gastric cancer using MTA2 Antibody (CAB10980) at dilution of 1:100 (40x lens).