

# Bcl-2 Rabbit Polyclonal Antibody



CAB11025

## Product Information

### Size:

20uL, 50uL, 100uL, 200uL

### Observed MW:

24kDa/28kDa

### Calculated MW:

22kDa/26kDa

### Applications:

WB IHC IF IP

### Reactivity:

Human, Mouse, Rat

## Protein Background

This gene encodes an integral outer mitochondrial membrane protein that blocks the apoptotic death of some cells such as lymphocytes. Constitutive expression of BCL2, such as in the case of translocation of BCL2 to Ig heavy chain locus, is thought to be the cause of follicular lymphoma. Alternative splicing results in multiple transcript variants.

## Immunogen information

### Gene ID:

596

### Uniprot

P10415

### Synonyms:

Bcl-2; PPP1R50; BCL2

## Antibody Information

### Recommended dilutions:

WB 1:500 - 1:2000 IHC 1:50

- 1:200 IF 1:50 - 1:200 IP

1:50 - 1:100

### Source:

Rabbit

### Immunogen:

A synthetic peptide corresponding to a sequence within amino acids 1-100 of human Bcl-2 (NP\_000624.2).

### Storage:

Store at -20°C. Avoid freeze / thaw cycles. Buffer: PBS with 0.02% sodium azide, 50% glycerol, pH7.3.

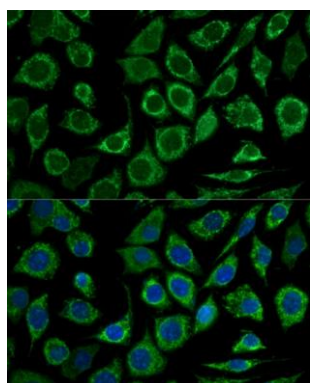
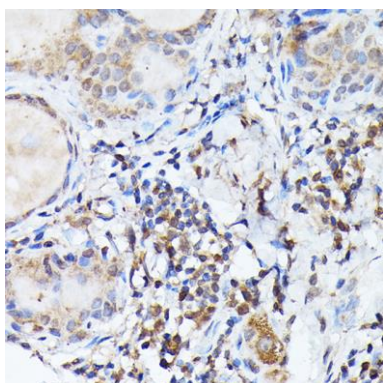
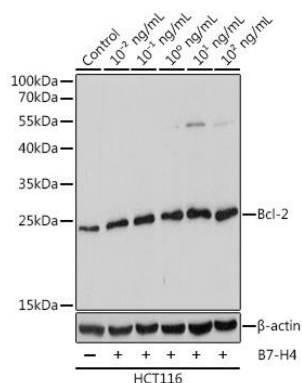
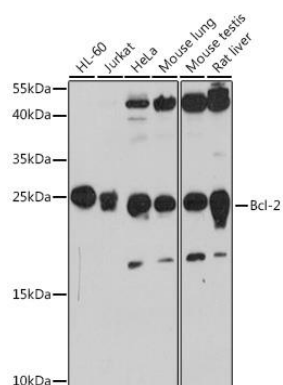
### Isotype:

IgG

### Purification:

Affinity purification

## Product Images



Western blot analysis of extracts of various cell lines, using Bcl-2 antibody (CAB11025) at 1:1000 dilution. Secondary antibody: HRP Goat Anti-Rabbit IgG (H+L) (CABS014) at 1:10000 dilution. Lysates/proteins: 25ug per lane. Blocking buffer: 3% nonfat dry milk in TBST. Detection: ECL Basic Kit (CABM00020). Exposure time: 90s.

Western blot analysis of extracts of HCT116 cells, using Bcl-2 antibody (CAB11025) at 1:1000 dilution. HCT116 cells treated with different concentrations of B7-H4. Secondary antibody: HRP Goat Anti-Rabbit IgG (H+L) (CABS014) at 1:10000 dilution. Lysates/proteins: 25ug per lane. Blocking buffer: 3% BSA. Detection: ECL Basic Kit (CABM00020). Exposure time: 5s.

Immunohistochemistry of paraffin-embedded human thyroid cancer using Bcl-2 Rabbit pAb (CAB11025) at dilution of 1:100 (40x lens).

Immunofluorescence analysis of L929 cells using Bcl-2 antibody (CAB11025) at dilution of 1:100. Blue: DAPI for nuclear staining.