

Tau Rabbit Polyclonal Antibody



CAB1103

Product Information

Size:

20uL, 50uL, 100uL, 200uL

Observed MW:

55kDa/75kDa

Calculated MW:

32-45kDa/78- 80kDa

Applications:

WB IHC IF

Reactivity:

Human, Mouse, Rat

Antibody Information

Recommended dilutions:

WB 1:500 - 1:2000 IHC
1:100 - 1:200 IF 1:50 -
1:200

Source:

Rabbit

Isotype:

IgG

Purification:

Affinity purification

Protein Background

This gene encodes the microtubule-associated protein tau (MAPT) whose transcript undergoes complex, regulated alternative splicing, giving rise to several mRNA species. MAPT transcripts are differentially expressed in the nervous system, depending on stage of neuronal maturation and neuron type. MAPT gene mutations have been associated with several neurodegenerative disorders such as Alzheimer's disease, Pick's disease, frontotemporal dementia, cortico-basal degeneration and progressive supranuclear palsy.

Immunogen information

Gene ID:

4137

Uniprot

P10636

Synonyms:

DDPAC; FTDP-17; MAPTL; MSTD; MTBT1; MTBT2; PPND; PPP1R103;
TAU; MAPT; Tau

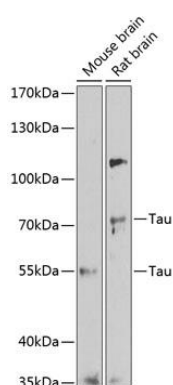
Immunogen:

A synthetic peptide corresponding to a sequence within amino acids 1-100 of human Tau (NP_001116538).

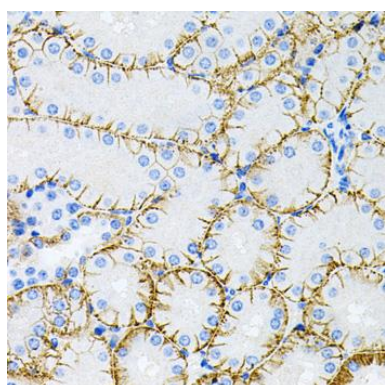
Storage:

Store at -20°C. Avoid freeze / thaw cycles. Buffer: PBS with 0.02% sodium azide, 50% glycerol, pH7.3.

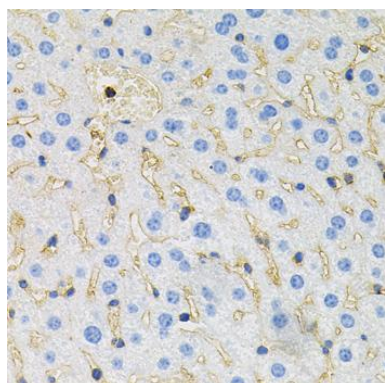
Product Images



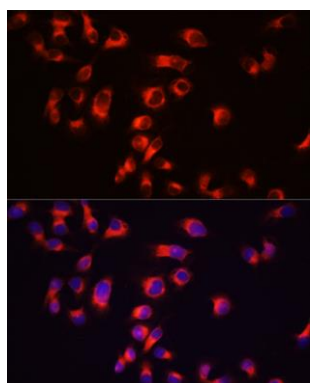
Western blot analysis of extracts of various cell lines, using Tau antibody (CAB1103) at 1:1000 dilution. Secondary antibody: HRP Goat Anti-Rabbit IgG (H+L) (CABS014) at 1:10000 dilution. Lysates/proteins: 25ug per lane. Blocking buffer: 3% nonfat dry milk in TBST. Detection: ECL Basic Kit (CABM00020). Exposure time: 90s.



Immunohistochemistry of paraffin-embedded mouse kidney using Tau antibody (CAB1103) at dilution of 1:100 (40x lens).



Immunohistochemistry of paraffin-embedded mouse liver using Tau antibody (CAB1103) at dilution of 1:100 (40x lens).



Immunofluorescence analysis of A431 cells using Tau antibody (CAB1103) at dilution of 1:100 (40x lens). Blue: DAPI for nuclear staining.