

Glutaminase Rabbit Monoclonal Antibody



CAB11043

Product Information

Size:

20uL, 50uL, 100uL, 200uL

Observed MW:

55-65kDa

Calculated MW:

65, 73kDa

Applications:

WB IF

Reactivity:

Human

Protein Background

This gene encodes the K-type mitochondrial glutaminase. The encoded protein is an phosphate-activated amidohydrolase that catalyzes the hydrolysis of glutamine to glutamate and ammonia. This protein is primarily expressed in the brain and kidney plays an essential role in generating energy for metabolism, synthesizing the brain neurotransmitter glutamate and maintaining acid-base balance in the kidney. Alternate splicing results in multiple transcript variants. [provided by RefSeq, Jan 2012]

Immunogen information

Gene ID:

2744

Uniprot

O94925

Synonyms:

AAD20; GAC; GAM; GLS1; KGA

Antibody Information

Recommended dilutions:

WB 1:500 - 1:2000 IF 1:50 - 1:200

Source:

Rabbit

Isotype:

IgG

Purification:

Affinity purification

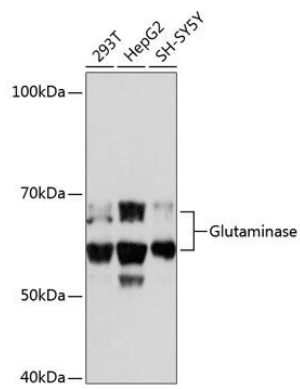
Immunogen:

A synthesized peptide derived from human Glutaminase

Storage:

Store at -20°C. Avoid freeze / thaw cycles. Buffer: PBS with 0.02% sodium azide, 0.05% BSA, 50% glycerol, pH7.3.

Product Images



Western blot - Glutaminase Rabbit mAb (CAB11043)