

CREB1 Rabbit Polyclonal Antibody



CAB11064

Product Information

Size:

20uL, 50uL, 100uL, 200uL

Observed MW:

43kDa

Calculated MW:

25kDa/35kDa/36kDa

Applications:

WB IF IP

Reactivity:

Human, Mouse, Rat

Protein Background

This gene encodes a transcription factor that is a member of the leucine zipper family of DNA binding proteins. This protein binds as a homodimer to the cAMP-responsive element, an octameric palindrome. The protein is phosphorylated by several protein kinases, and induces transcription of genes in response to hormonal stimulation of the cAMP pathway. Alternate splicing of this gene results in several transcript variants encoding different isoforms.

Immunogen information

Gene ID:

1385

Uniprot

P16220

Synonyms:

CREB1; CREB; CREB-1

Antibody Information

Recommended dilutions:

WB 1:500 - 1:1000 IF 1:20 -
1:100 IP 1:50 - 1:200

Source:

Rabbit

Isotype:

IgG

Purification:

Affinity purification

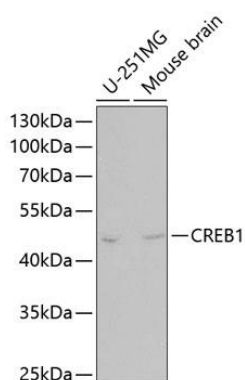
Immunogen:

Recombinant fusion protein containing a sequence corresponding to amino acids 1-120 of human CREB1 (NP_604391.1).

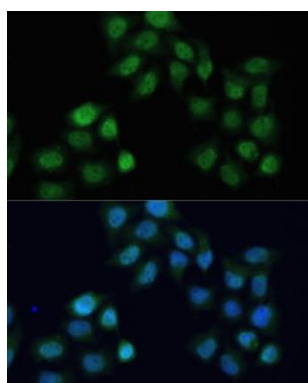
Storage:

Store at -20°C. Avoid freeze / thaw cycles. Buffer: PBS with 0.02% sodium azide, 50% glycerol, pH7.3.

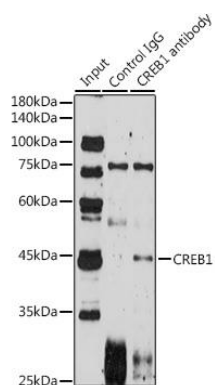
Product Images



Western blot analysis of extracts of various cell lines, using CREB1 antibody (CAB11064). Secondary antibody: HRP Goat Anti-Rabbit IgG (H+L) (CABS014) at 1:10000 dilution. Lysates/proteins: 25ug per lane. Blocking buffer: 3% nonfat dry milk in TBST.



Immunofluorescence analysis of HeLa cells using CREB1 antibody (CAB11064) at dilution of 1:100. Blue: DAPI for nuclear staining.



Immunoprecipitation analysis of 300ug extracts of HeLa cells using 3ug CREB1 antibody (CAB11064). Western blot was performed from the immunoprecipitate using CREB1 antibody (CAB11064) at a dilution of 1:1000.