

CTGF Rabbit Polyclonal Antibody



CAB11067

Product Information

Size:

20uL, 50uL, 100uL, 200uL

Observed MW:

38kDa

Calculated MW:

35kDa/38kDa

Applications:

WB IHC IF

Reactivity:

Human, Mouse, Rat

Protein Background

The protein encoded by this gene is a mitogen that is secreted by vascular endothelial cells. The encoded protein plays a role in chondrocyte proliferation and differentiation, cell adhesion in many cell types, and is related to platelet-derived growth factor. Certain polymorphisms in this gene have been linked with a higher incidence of systemic sclerosis.

Immunogen information

Gene ID:

1490

Uniprot

P29279

Synonyms:

CTGF; CCN2; HCS24; IGFBP8; NOV2

Antibody Information

Recommended dilutions:

WB 1:500 - 1:2000 IHC 1:50
- 1:200 IF 1:20 - 1:50

Source:

Rabbit

Isotype:

IgG

Purification:

Affinity purification

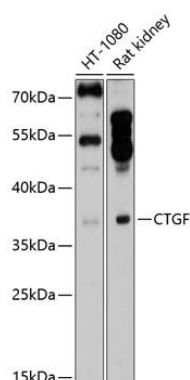
Immunogen:

Recombinant fusion protein containing a sequence corresponding to amino acids 27-349 of human CTGF (NP_001892.1).

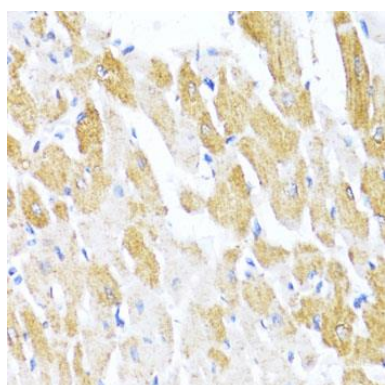
Storage:

Store at -20°C. Avoid freeze / thaw cycles. Buffer: PBS with 0.02% sodium azide, 50% glycerol, pH7.3.

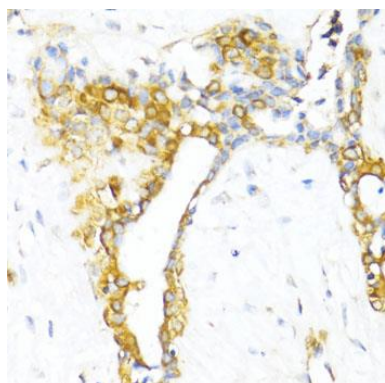
Product Images



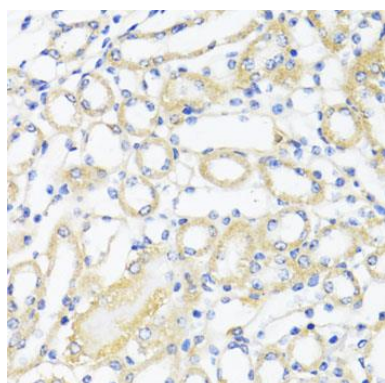
Western blot analysis of extracts of various cell lines, using CTGF antibody (CAB11067) at 1:1000 dilution. Secondary antibody: HRP Goat Anti-Rabbit IgG (H+L) (CABS014) at 1:10000 dilution. Lysates/proteins: 25ug per lane. Blocking buffer: 3% nonfat dry milk in TBST. Detection: ECL Enhanced Kit (CABM00021). Exposure time: 30s.



Immunohistochemistry of paraffin-embedded rat heart using CTGF antibody (CAB11067) at dilution of 1:100 (40x lens).



Immunohistochemistry of paraffin-embedded human breast using CTGF antibody (CAB11067) at dilution of 1:100 (40x lens).



Immunohistochemistry of paraffin-embedded mouse kidney using CTGF antibody (CAB11067) at dilution of 1:100 (40x lens).