

ARHGEF7 Rabbit Polyclonal Antibody



CAB1108

Product Information

Size:

20uL, 50uL, 100uL, 200uL

Observed MW:

86kDa

Calculated MW:

70kDa/73kDa/82kDa/84kDa/
87kDa/90kDa

Applications:

WB IF

Reactivity:

Human, Mouse, Monkey

Antibody Information

Recommended dilutions:

WB 1:500 - 1:2000 IF 1:50 -
1:100

Source:

Rabbit

Isotype:

IgG

Purification:

Affinity purification

Protein Background

This gene encodes a protein that belongs to a family of cytoplasmic proteins that activate the Ras-like family of Rho proteins by exchanging bound GDP for GTP. It forms a complex with the small GTP binding protein Rac1 and recruits Rac1 to membrane ruffles and to focal adhesions. Multiple alternatively spliced transcript variants encoding different isoforms have been observed for this gene.

Immunogen information

Gene ID:

8874

Uniprot

Q14155

Synonyms:

ARHGEF7; BETA-PIX; COOL-1; COOL1; Nbla10314; P50; P50BP; P85;
P85COOL1; P85SPR; PAK3; PIXB

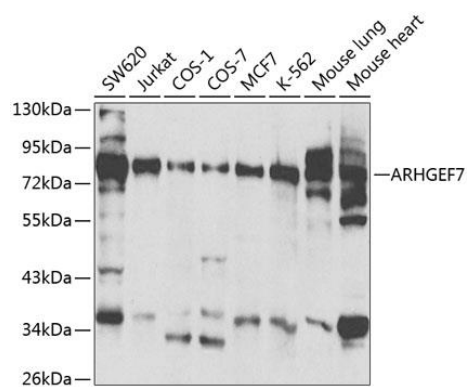
Immunogen:

Recombinant fusion protein containing a sequence corresponding to amino acids 1-260 of human ARHGEF7 (NP_001106984.1).

Storage:

Store at -20°C. Avoid freeze / thaw cycles. Buffer: PBS with 0.02% sodium azide, 50% glycerol, pH7.3.

Product Images



Western blot analysis of extracts of various cell lines, using ARHGEF7 antibody (CAB1108) at 1:500 dilution. Secondary antibody: HRP Goat Anti-Rabbit IgG (H+L) (CABS014) at 1:10000 dilution. Lysates/proteins: 25ug per lane. Blocking buffer: 3% nonfat dry milk in TBST.