

# BCL2L13 Rabbit Polyclonal Antibody



CAB1109

## Product Information

### Size:

20uL, 50uL, 100uL, 200uL

### Observed MW:

48kDa

### Calculated MW:

22kDa/34kDa/52kDa

### Applications:

WB IF

### Reactivity:

Human

## Protein Background

This gene encodes a mitochondrially-localized protein with conserved B-cell lymphoma 2 homology motifs. Overexpression of the encoded protein results in apoptosis. Alternatively spliced transcript variants have been observed for this gene.

## Immunogen information

### Gene ID:

23786

### Uniprot

Q9BXK5

### Synonyms:

BCL2L13; BCL-RAMBO; Bcl2-L-13; MIL1

## Antibody Information

### Recommended dilutions:

WB 1:500 - 1:2000 IF 1:20 - 1:50

### Source:

Rabbit

### Isotype:

IgG

### Purification:

Affinity purification

### Immunogen:

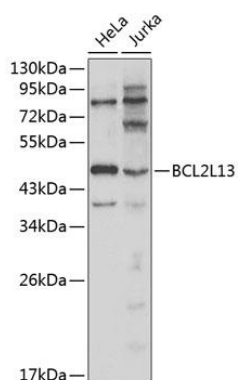
Recombinant fusion protein containing a sequence corresponding to amino acids 1-300 of human BCL2L13 (NP\_056182.2).

### Storage:

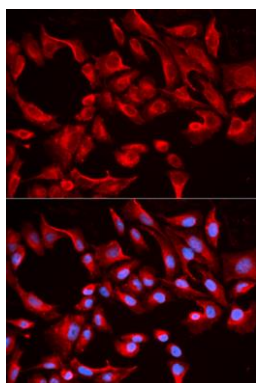
Store at -20°C. Avoid freeze / thaw cycles. Buffer: PBS with 0.02% sodium azide, 50% glycerol, pH7.3.

## Product Images

---



Western blot analysis of extracts of various cell lines, using BCL2L13 antibody (CAB1109). Secondary antibody: HRP Goat Anti-Rabbit IgG (H+L) (CABS014) at 1:10000 dilution. Lysates/proteins: 25ug per lane. Blocking buffer: 3% nonfat dry milk in TBST.



Immunofluorescence analysis of HeLa cells using BCL2L13 antibody (CAB1109). Blue: DAPI for nuclear staining.