

GRM1 Rabbit Polyclonal Antibody



CAB11094

Product Information

Size:

20uL, 50uL, 100uL, 200uL

Observed MW:

132kDa

Calculated MW:

101kDa/132kDa

Applications:

WB IF

Reactivity:

Rat

Antibody Information

Recommended dilutions:

WB 1:500 - 1:2000 IF 1:50 - 1:200

Source:

Rabbit

Isotype:

IgG

Purification:

Affinity purification

Protein Background

This gene encodes a metabotropic glutamate receptor that functions by activating phospholipase C. L-glutamate is the major excitatory neurotransmitter in the central nervous system and activates both ionotropic and metabotropic glutamate receptors. Glutamatergic neurotransmission is involved in most aspects of normal brain function and can be perturbed in many neuropathologic conditions. The canonical alpha isoform of the encoded protein is a disulfide-linked homodimer whose activity is mediated by a G-protein-coupled phosphatidylinositol-calcium second messenger system. This gene may be associated with many disease states, including schizophrenia, bipolar disorder, depression, and breast cancer. Alternative splicing results in multiple transcript variants encoding different isoforms.

Immunogen information

Gene ID:

2911

Uniprot

Q13255

Synonyms:

GRM1; GPRC1A; MGLU1; MGLUR1; PPP1R85; SCAR13

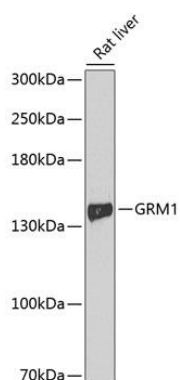
Immunogen:

Recombinant fusion protein containing a sequence corresponding to amino acids 921-1010 of human GRM1 (NP_001264993.1).

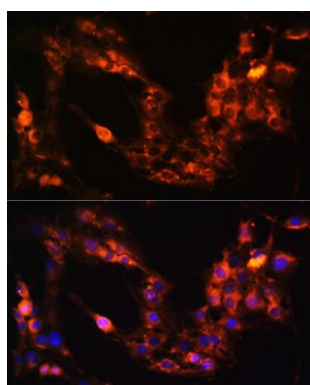
Storage:

Store at -20°C. Avoid freeze / thaw cycles. Buffer: PBS with 0.02% sodium azide, 50% glycerol, pH7.3.

Product Images



Western blot analysis of extracts of rat liver, using GRM1 antibody (CAB11094) at 1:1000 dilution. Secondary antibody: HRP Goat Anti-Rabbit IgG (H+L) (CABS014) at 1:10000 dilution. Lysates/proteins: 25ug per lane. Blocking buffer: 3% nonfat dry milk in TBST. Detection: ECL Basic Kit (CABM00020). Exposure time: 90s.



Immunofluorescence analysis of C6 cells using GRM1 Rabbit pAb (CAB11094) at dilution of 1:100 (40x lens). Blue: DAPI for nuclear staining.